

## 环境篇: CM+CDH6.2.0安装(全网最全)

2020-07-30 分类: 文章 阅读(687) 评论(0)



### 关注公众号

- 加入社群 —
- 「十大城市」工作内推
- 「微信/QQ」技术讨论
- 「面试真题」随时领取

吐血推荐

学习必备: 精选优质专栏

学习必备: 精选优质专栏

## CM+CDH6.2.0环境准备

### 一 虚拟机及CentOs7配置

CentOS下载地址: [http://isoredirect.centos.org/centos/7/isos/x86\\_64/](http://isoredirect.centos.org/centos/7/isos/x86_64/)

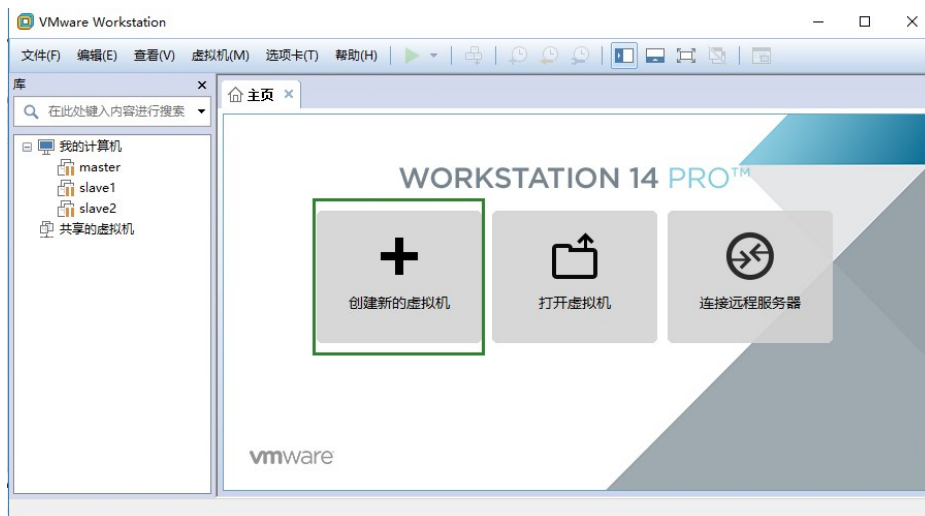
CentOS百度网盘: <https://pan.baidu.com/s/196ji62wTPlAhkTw9u4P6pw>; 提取码: seqd

VMware Workstation下载地址: <https://www.vmware.com/cn/products/workstation-pro.html>

VMware Workstation百度网盘: <https://pan.baidu.com/s/1gaJMqZJXSHGUEw4tHS4fdA> 提取码: jrv8

master(16g+80g+2cpu+2核)+2台slave(8g+60g+2cpu+2核)

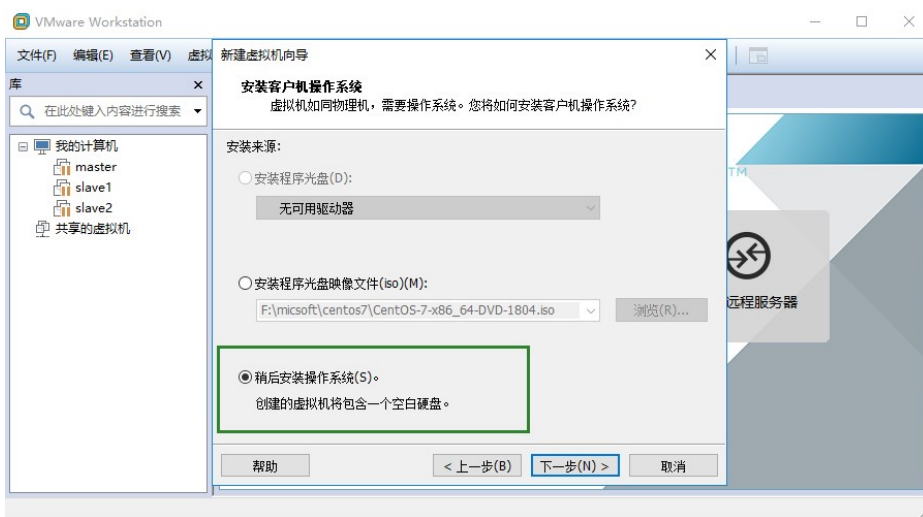
#### 1.1 打开“VMware Workstation”，选择“创建新的虚拟机”



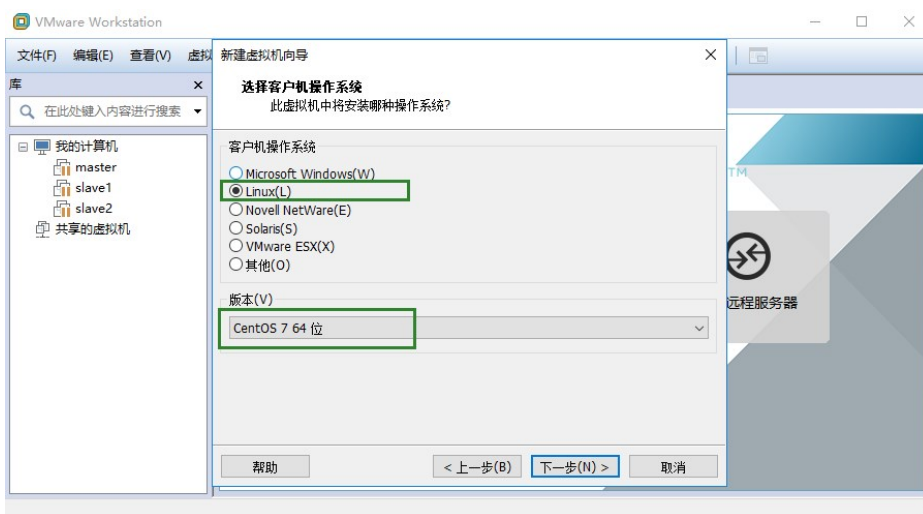
#### 1.2 选择“典型”选项，点击“下一步”



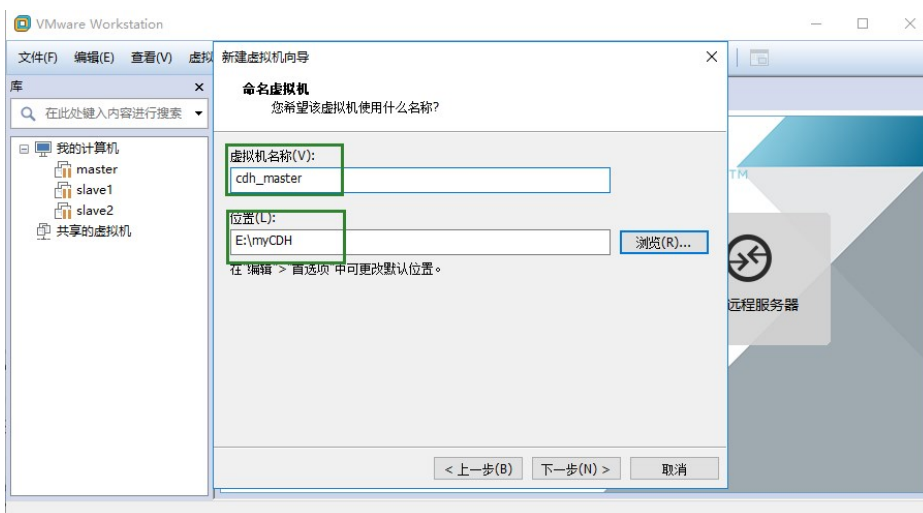
### 1.3 选择“稍后安装操作系统”，点击“下一步”



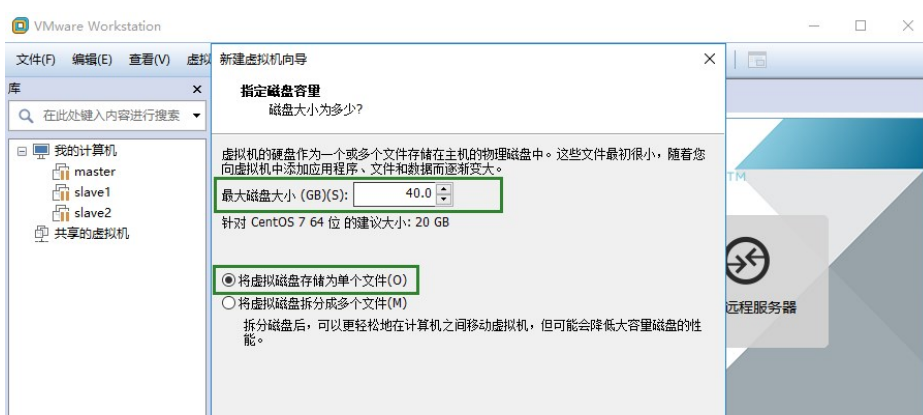
### 1.4 选择“Linux CentOS7 64位”，点击“下一步”



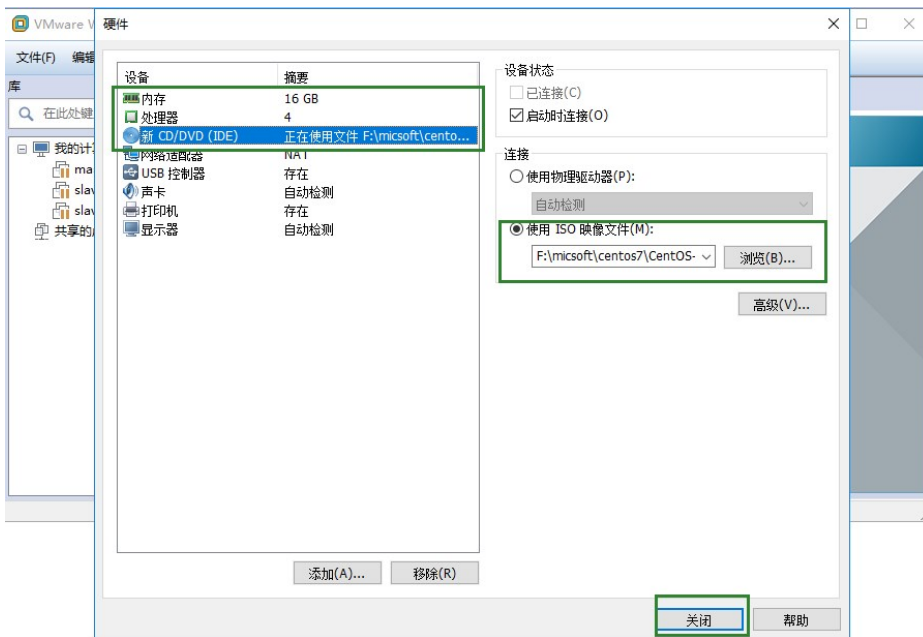
### 1.5 选择“虚拟机名称及存放位置”，点击“下一步”



### 1.6 选择“磁盘大小及单文件存储”，点击“下一步”

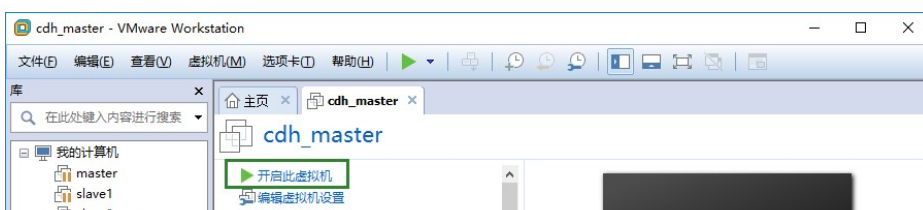


## 1.7 选择“自定义硬件”，修改内存-处理器-CD指向，点击“完成”



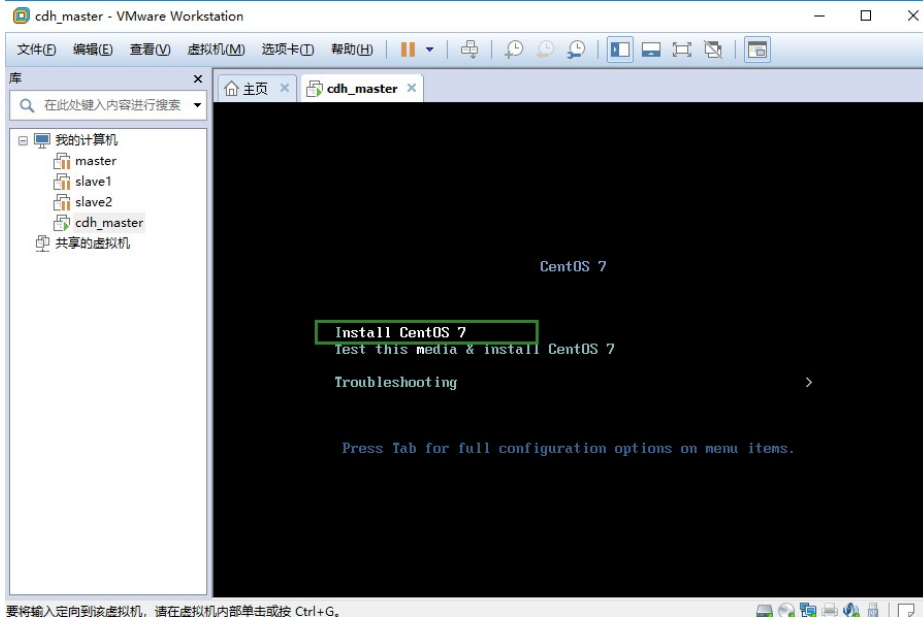
## 二 CentOS7安装

### 2.1 选择创建好的虚拟机，”开启此虚拟机“



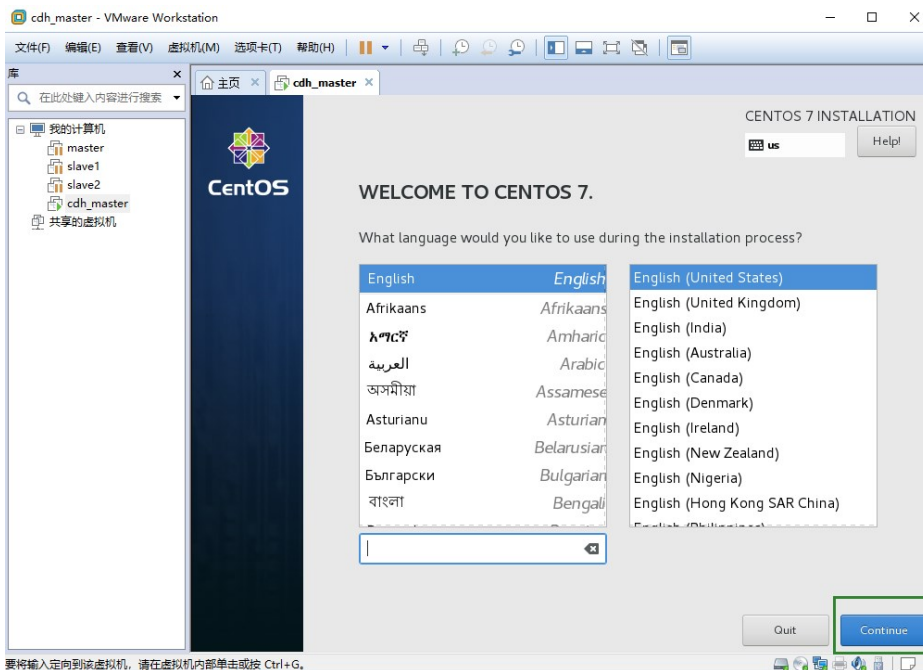


## 2.2 选择安装centos7



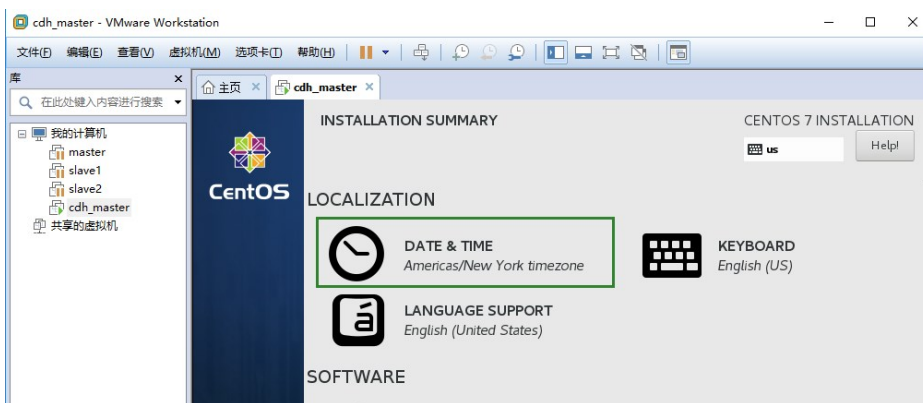
要将输入定向到该虚拟机，请在虚拟机内部单击或按 Ctrl+G。

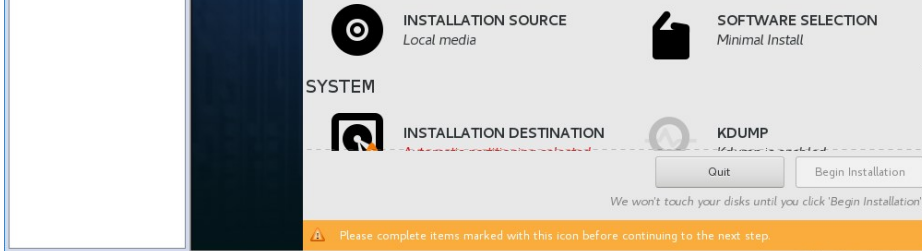
## 2.3 选择英文版安装



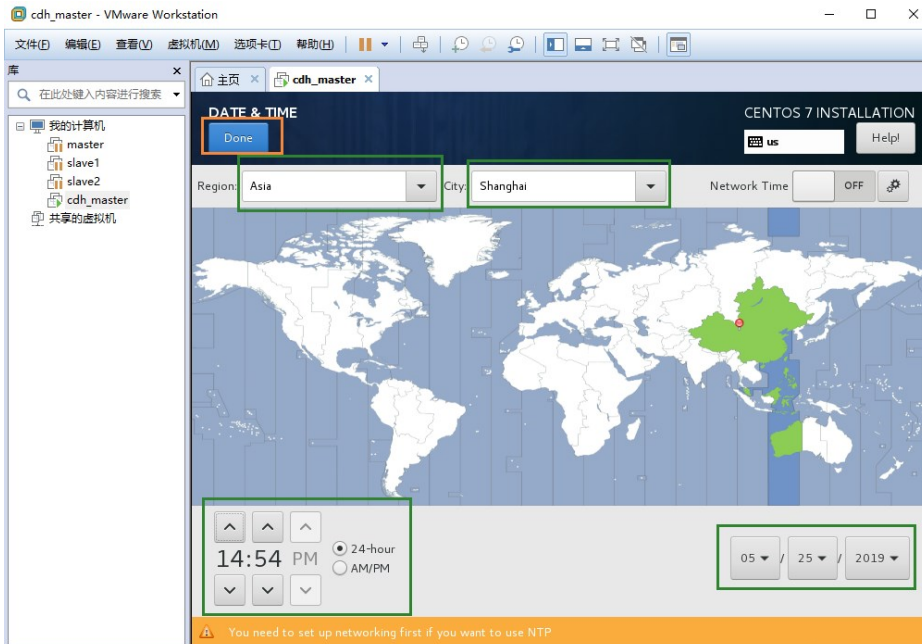
要将输入定向到该虚拟机，请在虚拟机内部单击或按 Ctrl+G。

## 2.4 配置时间



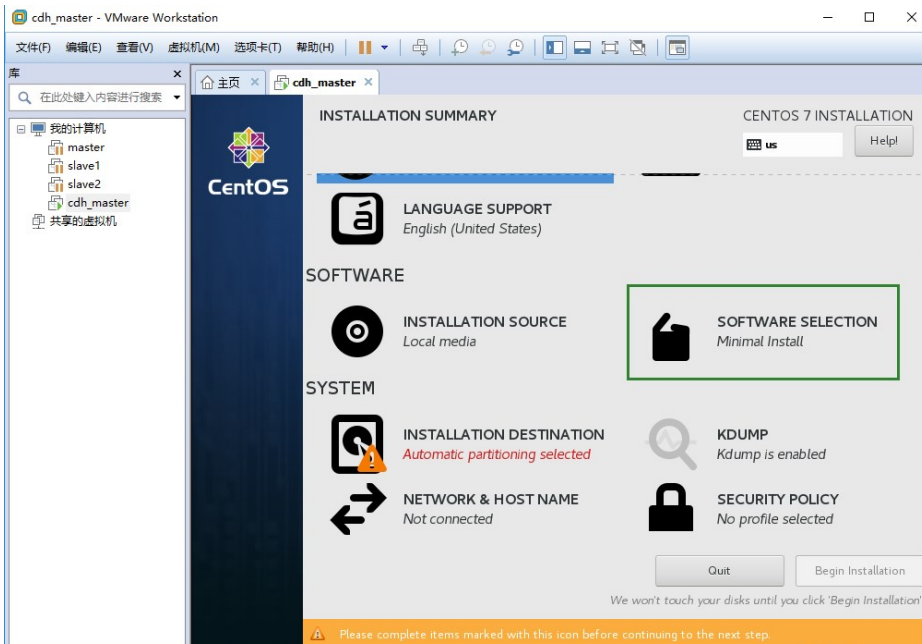


要将输入定向到该虚拟机，请在虚拟机内部单击或按 Ctrl+G。

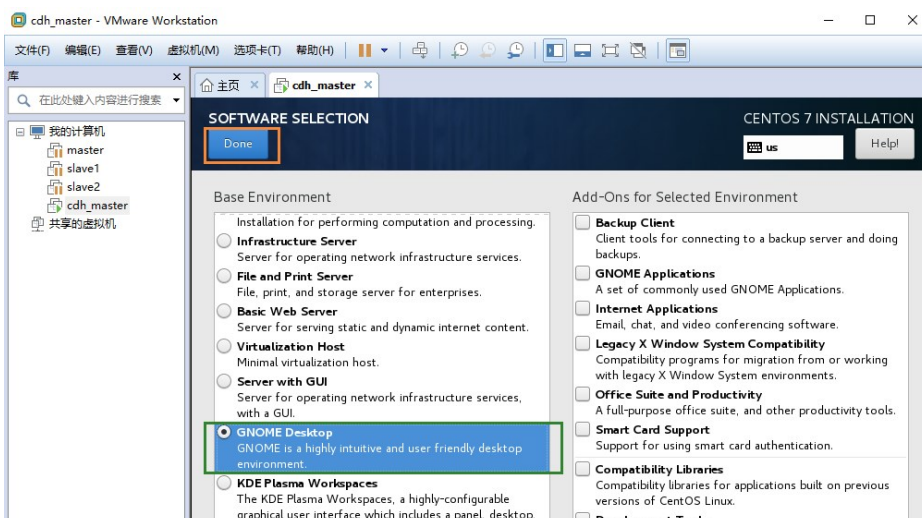


要将输入定向到该虚拟机，请在虚拟机内部单击或按 Ctrl+G。

## 2.5 软件选择



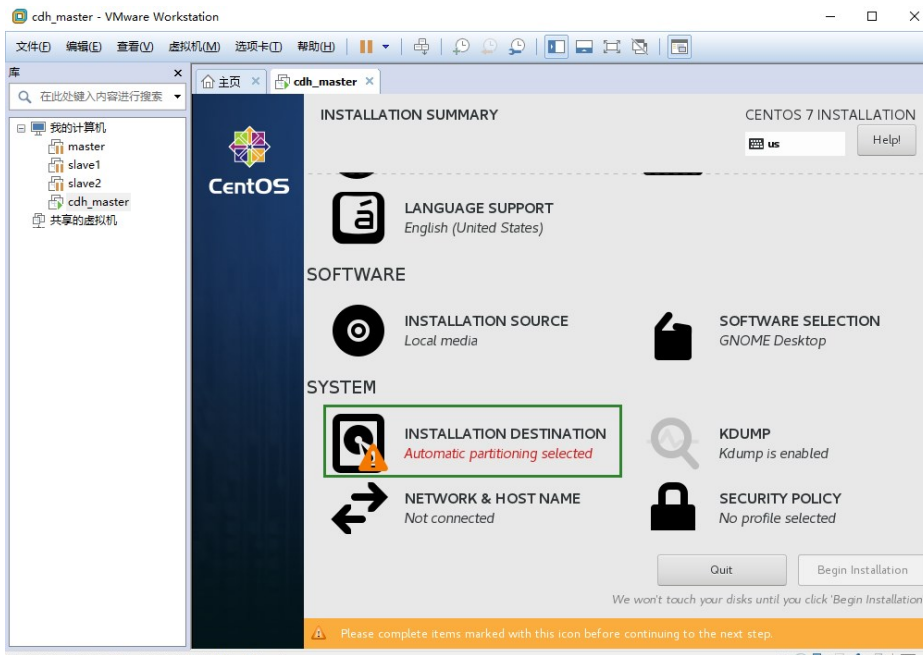
要将输入定向到该虚拟机，请在虚拟机内部单击或按 Ctrl+G。



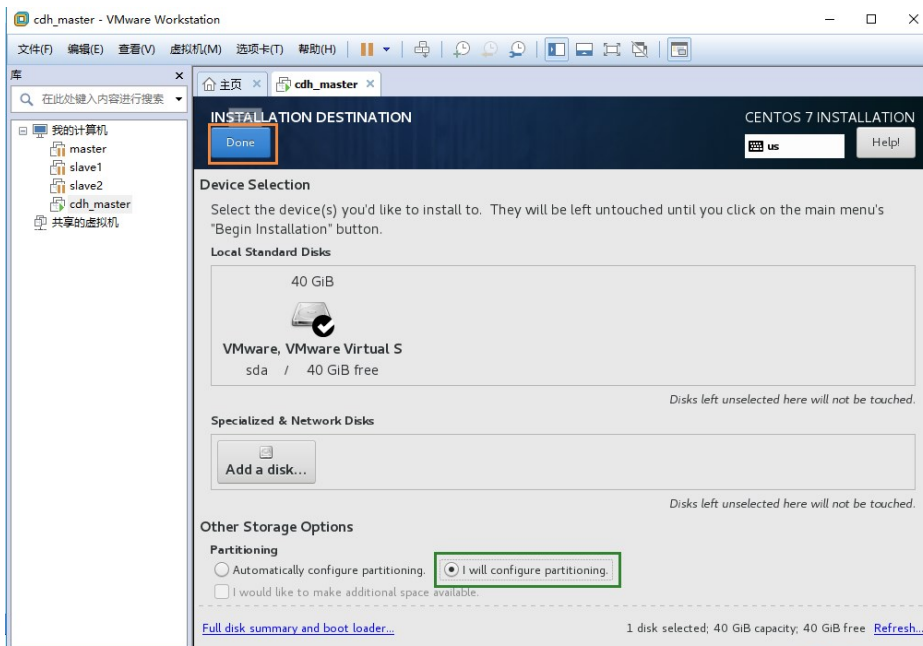
- Development Tools**  
A basic development environment.
  - Security Tools**  
Security tools for integrity and trust verification.
  - System Administration Tools**  
Utilities useful in system administration.
- system icons and desktop widgets, and many powerful KDE applications.
- Development and Creative Workstation**  
Workstation for software, hardware, graphics, or content development.

要将输入定向到该虚拟机，请在虚拟机内部单击或按 Ctrl+G。

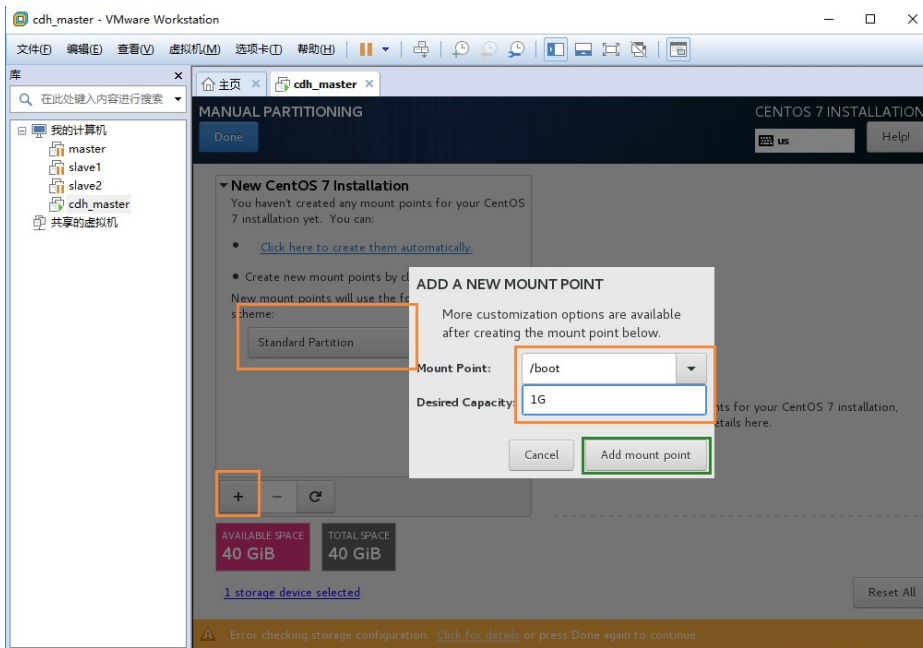
## 2.6 系统分区设置

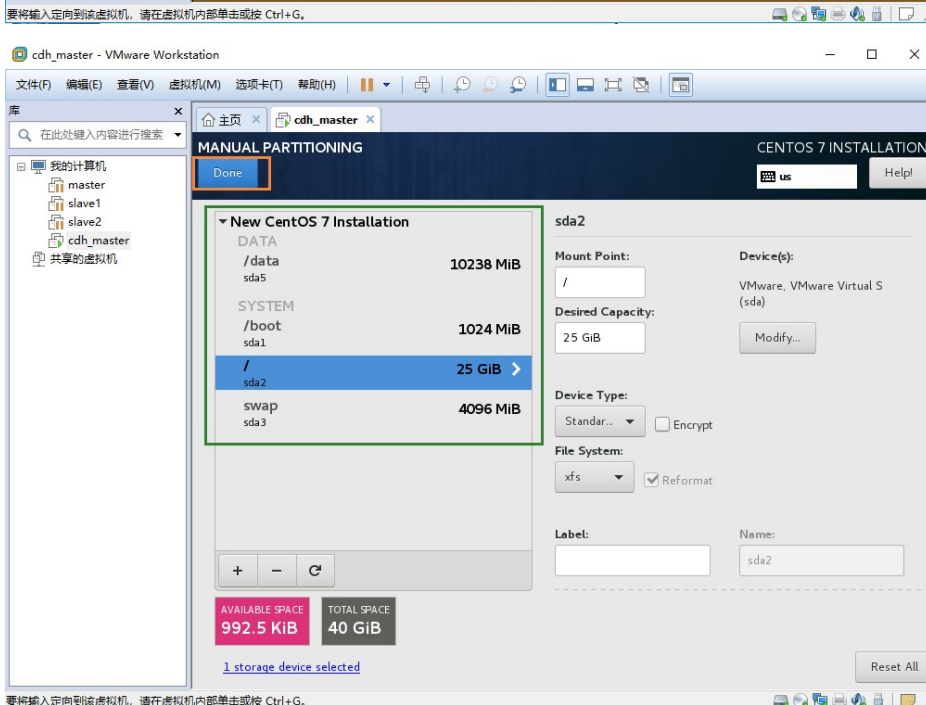


要将输入定向到该虚拟机，请在虚拟机内部单击或按 Ctrl+G。

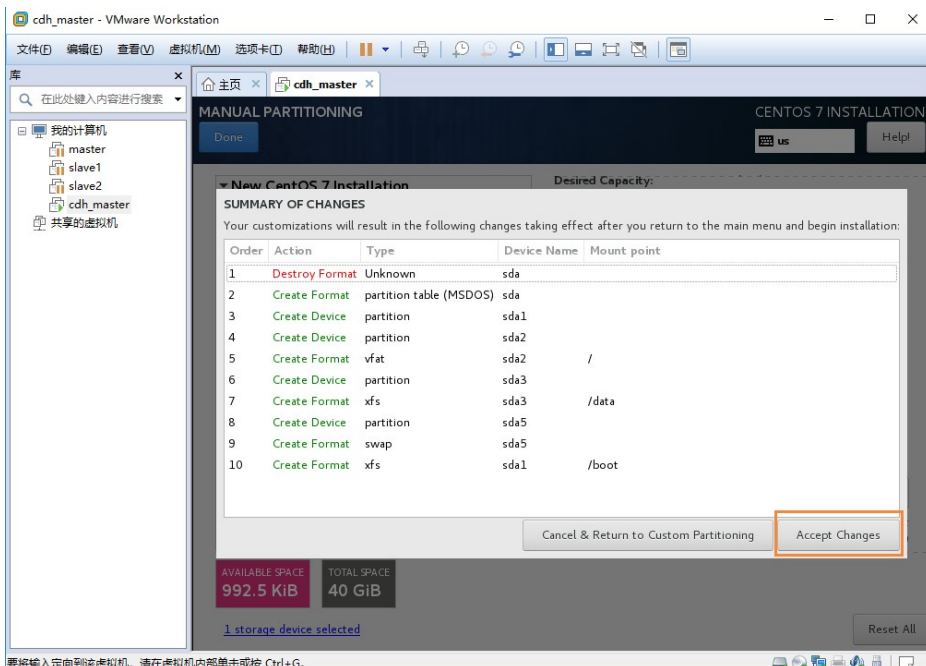


要将输入定向到该虚拟机，请在虚拟机内部单击或按 Ctrl+G。



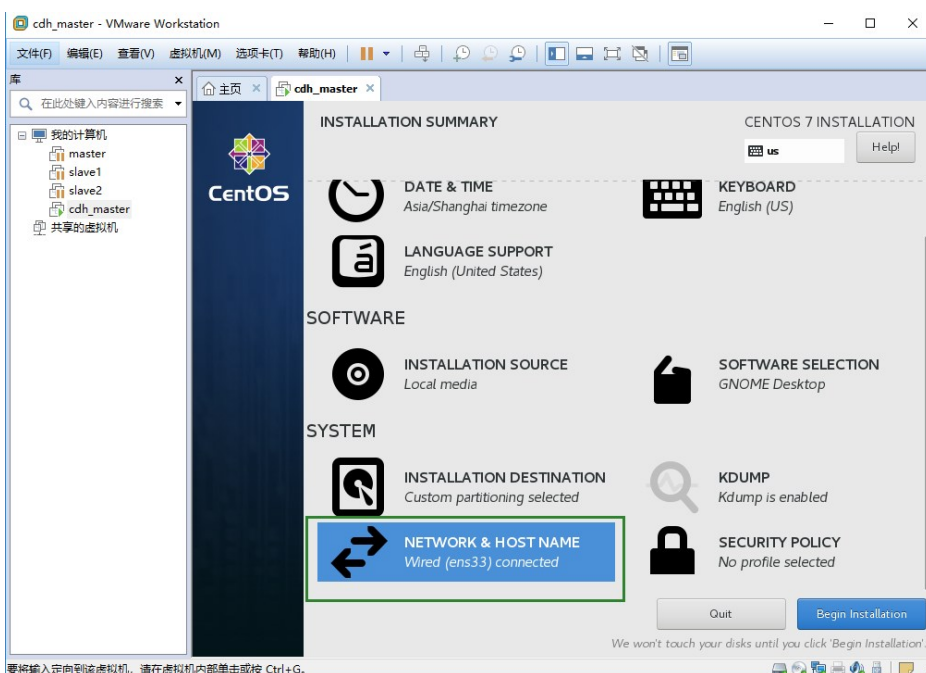


要将输入定向到该虚拟机，请在虚拟机内部单击或按 Ctrl+G.

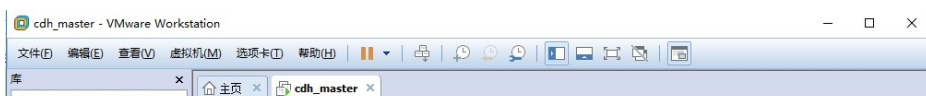


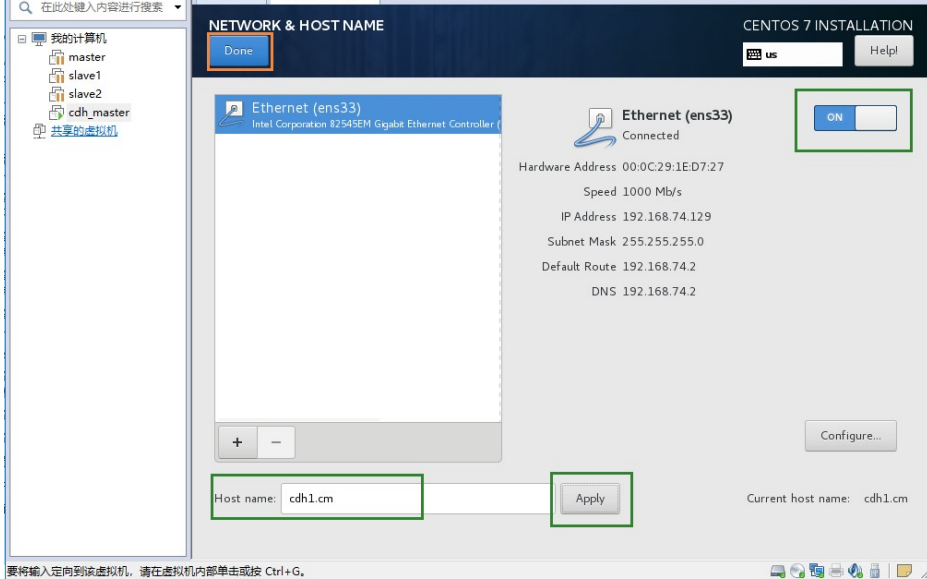
要将输入定向到该虚拟机，请在虚拟机内部单击或按 Ctrl+G.

## 2.7 网关配置

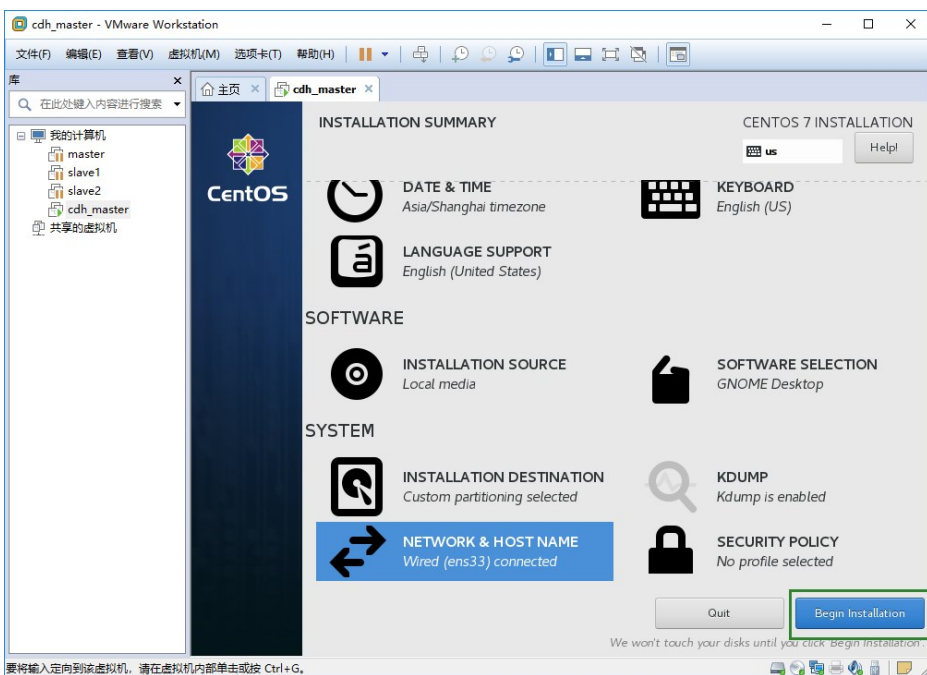


要将输入定向到该虚拟机，请在虚拟机内部单击或按 Ctrl+G.

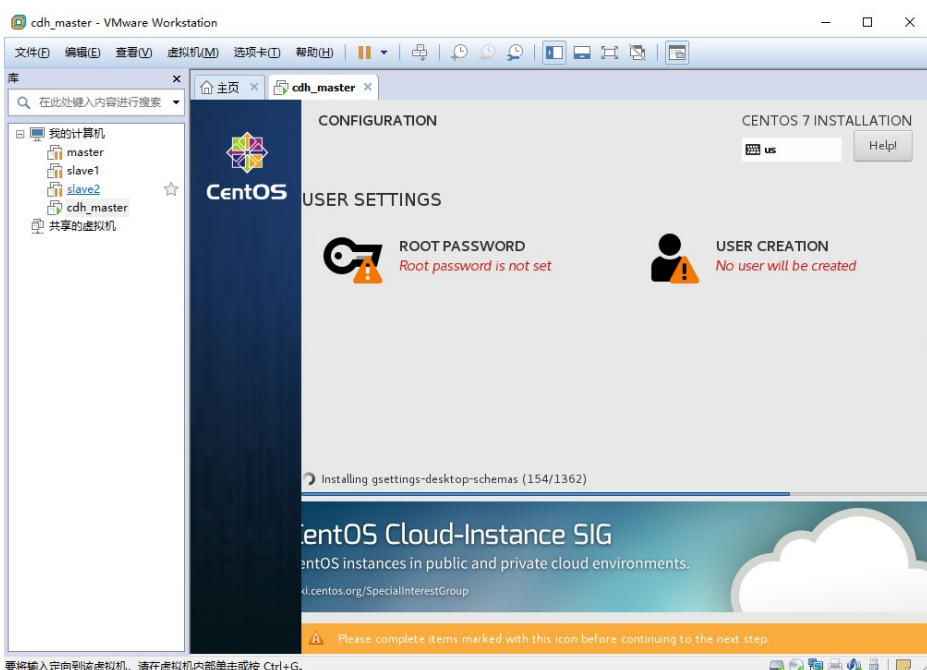




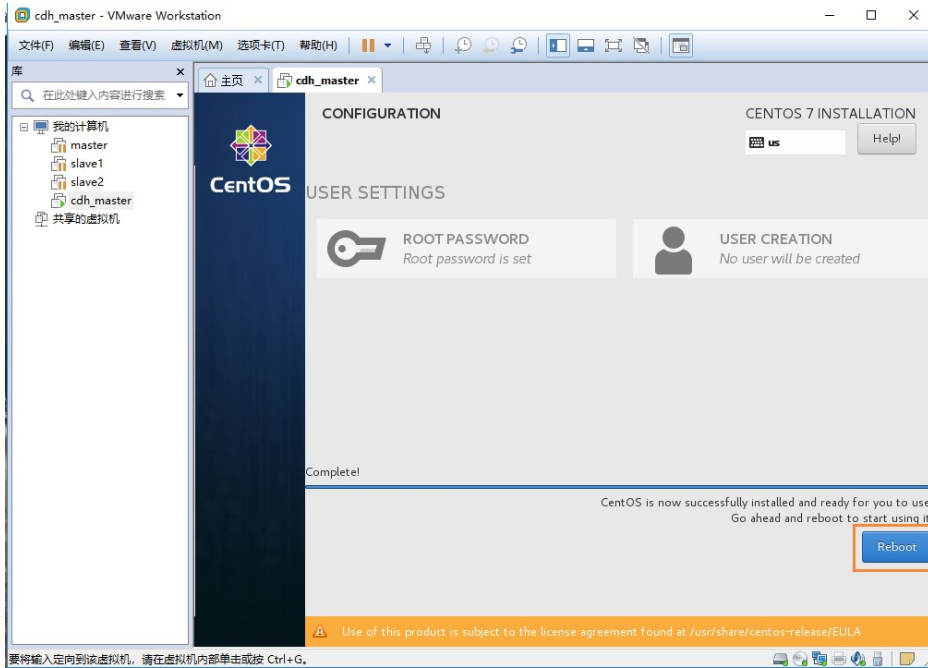
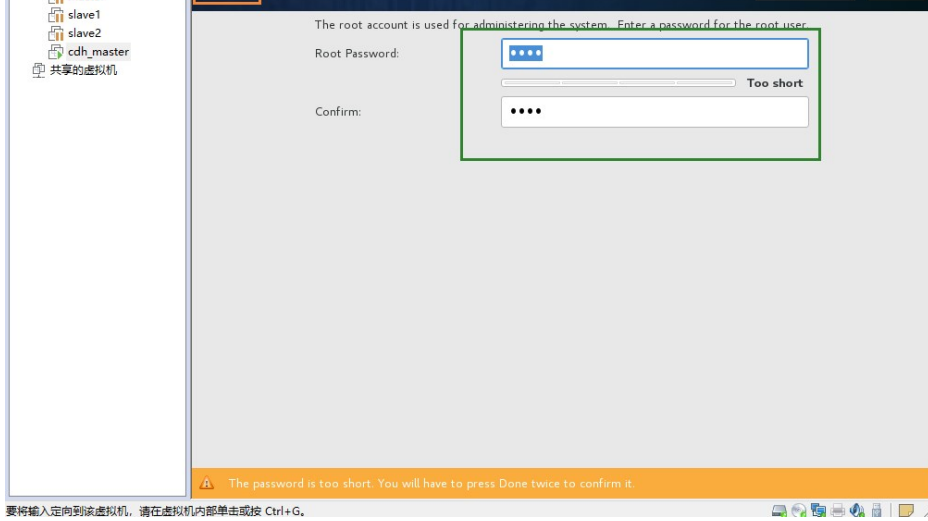
## 2.8 开始安装



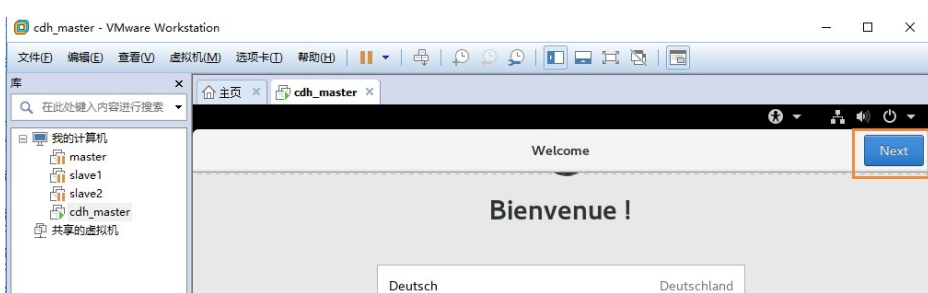
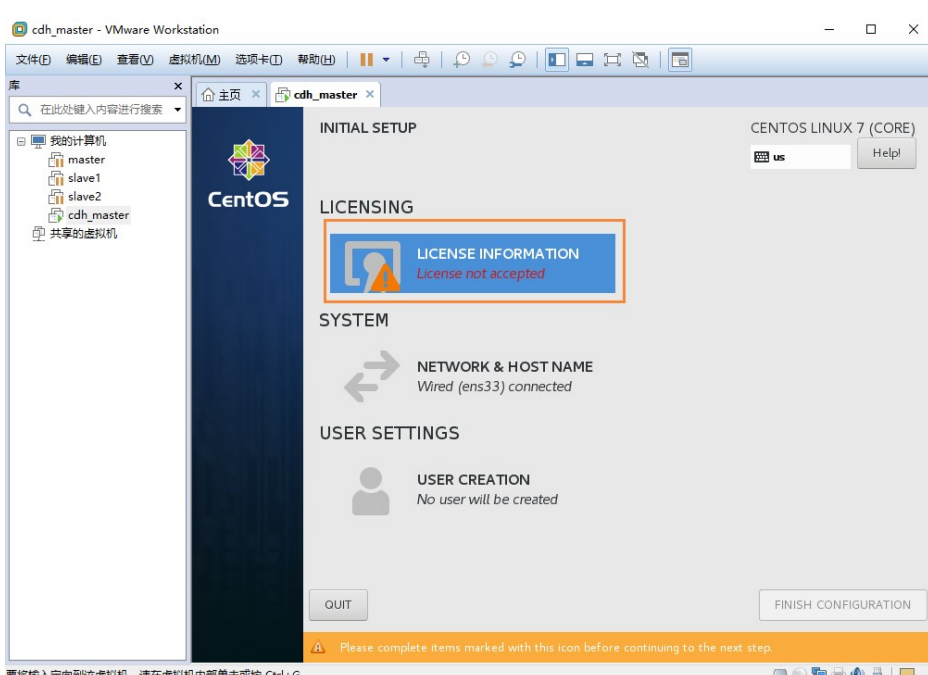
## 2.9 修改密码(一定要记住哦)，选择是否创建用户(这里没有创建)，等待安装完成

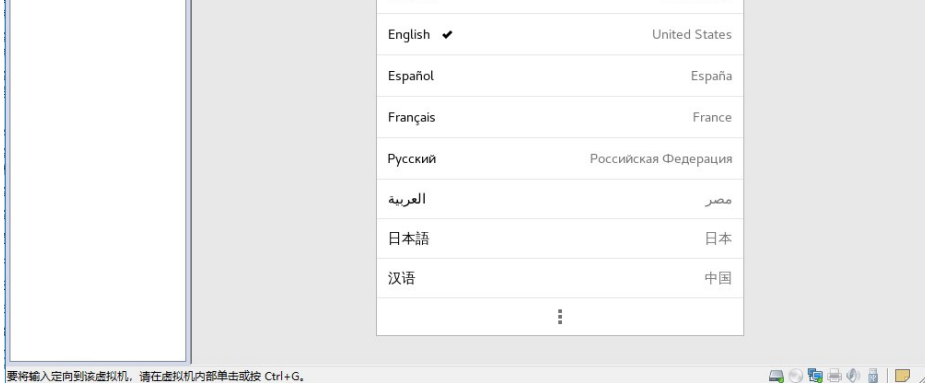




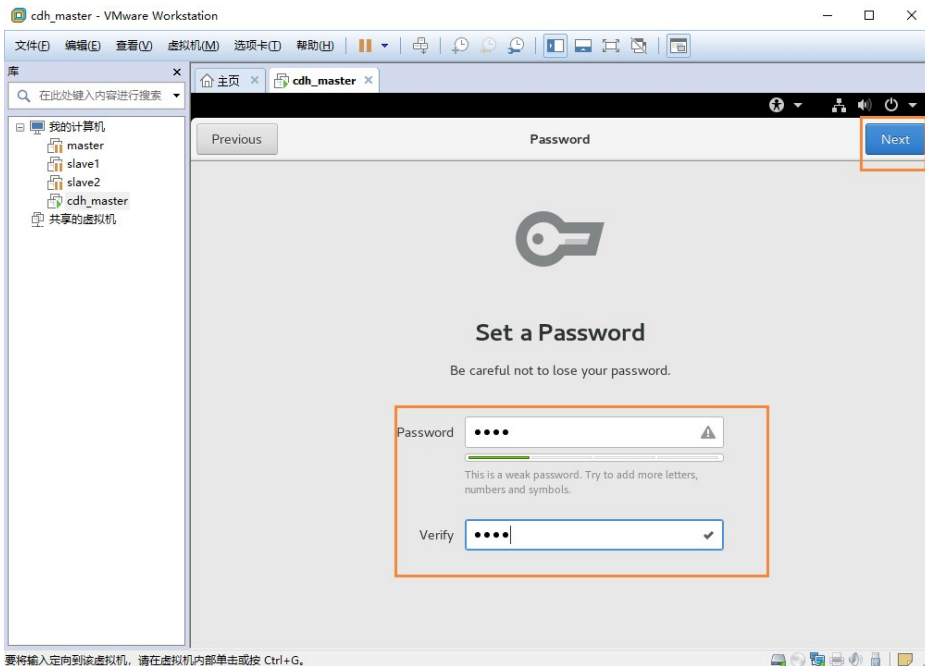


## 2.10 同意协议, 配置相关信息





要将输入定向到该虚拟机，请在虚拟机内部单击或按 Ctrl+G。



要将输入定向到该虚拟机，请在虚拟机内部单击或按 Ctrl+G。

### 三 配置IP

#### 3.1 查看原有IP

```
ifconfig
```

#### 3.2 修改网络配置文件

```
#进入root用户:需要输入密码
su root

#如下图中修改配置文件
vim /etc/sysconfig/network-scripts/ifcfg-ens33
#增加内容START(三台机器IPADDR:10,11,12)
IPADDR="192.168.74.10"
NETMASK="255.255.255.0"
GATEWAY="192.168.74.2"
DNS1="202.98.96.68"
#增加内容END

#修改完文件后,重启网络服务
service network restart
```

#### 3.3 再次查看IP

```
ifconfig
```

#### 3.4 验证网络是否通畅

#### 3.5 永久关闭网络管理让机器强制执行静态分配

```
#停止网络管理
systemctl stop NetworkManager
#删除网络管理
systemctl disable NetworkManager
#重启网络
systemctl restart network.service
```

## 四 关闭防火墙

### 4.1 永久关闭网络管理让机器强制执行静态分配

```
#查看防火墙状态
systemctl status firewalld.service
#临时关闭防火墙
systemctl stop firewalld.service
#禁止firewall开机启动
systemctl disable firewalld.service
```

### 4.2 关闭内核防火墙

```
#临时关闭内核防火墙
setenforce 0
getenforce
#永久关闭内核防火墙
vim /etc/selinux/config
```

## 五 准备其他节点机器

### 5.1 仿照上述4个步骤，建立节点机器，使IP在同一网段

### 5.2 多台相同配置的虚拟机可以采取复制虚拟机(找到原始机文件目录copy一份作为目标机)

### 5.3 根据“三配置IP”修改IP地址，虚拟机之间不能相同

### 5.4 网卡设置冲突，故将参与复制的原始机和目标机网卡移除在重新添加，会自动配置好。

### 5.5 检查是否可以上网，即完成配置

## 六 修改主机名及IP对应关系

### 6.1 临时修改命名(即时生效)

```
#查看机器名
hostname
#修改机器名(3台机器)
```

```
#cdh01机器名
hostname cdh01.cm
```

```
#cdh02机器名
hostname cdh02.cm
```

```
#cdh03机器名
hostname cdh03.cm
```

### 6.2 永久修改命名(重启后生效)

```
#cdh01机器名
vim /etc/sysconfig/network
#增加如下内容:
NETWORKING=yes
HOSTNAME=cdh01.cm
```

```
#cdh02机器名
vim /etc/sysconfig/network
#增加如下内容:
NETWORKING=yes
HOSTNAME=cdh02.cm
```

```
#cdh03机器名
vim /etc/sysconfig/network
#增加如下内容:
NETWORKING=yes
```

## 6.3 修改IP对应关系(配置完使用ping命令检测)

```
#cdh01-cdh03机器
vim /etc/hosts
#增加如下内容:
192.168.74.20 cdh01.cm
192.168.74.21 cdh02.cm
192.168.74.22 cdh03.cm
```

## 七 SSH免密

所有节点

```
#生成密钥对(公钥和私钥)三次回车生成密钥
ssh-keygen -t rsa
#查看公钥
cat /root/.ssh/id_rsa.pub
```

主节点

```
#将密钥输出到/root/.ssh/authorized_keys
cat /root/.ssh/id_rsa.pub > /root/.ssh/authorized_keys
chmod 600 /root/.ssh/authorized_keys
#追加密钥到主节点(需要操作及密码验证,追加完后查看一下该文件)
ssh cdh02.cm cat /root/.ssh/id_rsa.pub >> /root/.ssh/authorized_keys
ssh cdh03.cm cat /root/.ssh/id_rsa.pub >> /root/.ssh/authorized_keys
cat /root/.ssh/authorized_keys
#复制密钥到从节点
scp /root/.ssh/authorized_keys root@cdh02.cm:/root/.ssh/authorized_keys
scp /root/.ssh/authorized_keys root@cdh03.cm:/root/.ssh/authorized_keys
```

所有节点互相进行ssh连接

```
ssh cdh01.cm
ssh cdh02.cm
ssh cdh03.cm
```

## 八 修改时间同步(需要ntp)

主节点

```
#更新yum源ntp
yum -y install ntp

#查询机器时间
date

#时间同步
ntpdate pool.ntp.org

#查看时间同步服务
service ntpd status

#临时启用时间同步服务
service ntpd start

#配置ntpd永久生效(重启生效)
chkconfig ntpd on
```

从节点

```
使用crontab定时任务
crontab -e
添加定时任务(每分钟和主机同步)内容如下:
0-59/1 * * * * /usr/sbin/ntpdate cdh01.cm
```

## 九 配置本地yum云(需要httpd)(先看安装部分,下载需要的文件)

主节点

### 9.1 更新yum源httpd,进入其下目录,创建cm-6.1.0,管理文件夹,然后通过浏览器访问管理

```
#更新yum源httpd
yum -y install httpd
#查看httpd状态
systemctl status httpd.service
#启动httpd
service httpd start
#配置httpd永久生效(重启生效)
chkconfig httpd on
```

### 9.2 更新yum源yum-utils

```
#更新yum源yum-utils createrepo
```

```
yum -y install yum-utils createrepo
#进入yum源路径
cd /var/www/html/
#创建cm文件夹
mkdir cm
```

### 9.3 将下载好的资源添加进/var/www/html/cm/(参考cm+cdh安装)

```
#在添加完需要资源后,使用工具和本地的yum源创建联系
createrepo /var/www/html/cm/
```

### 9.4 创建本地repo文件

```
vim /etc/yum.repos.d/cloudera-manager.repo
#添加如下内容
[cloudera-manager]
name=Cloudera Manager, Version yum
baseurl=http://192.168.74.10/cm
gpgcheck=0
enabled=1
```

更新yum源

```
yum clean all
yum makecache
```

验证

```
yum list | grep cloudera-manager
```

### 9.5 将本地yum文件分发至从节点

```
scp /etc/yum.repos.d/cloudera-manager.repo root@cdh02.cm:/etc/yum.repos.d/
scp /etc/yum.repos.d/cloudera-manager.repo root@cdh03.cm:/etc/yum.repos.d/
```

## 十 安装JDK(所有节点)

```
#查看命令
rpm -qa | grep java
#删除命令
rpm -e --nodeps xxx
```

将oracle-j2sdk1.8-1.8.0+update181-1.x86\_64.rpm上传至每个节点安装

```
rpm -ivh oracle-j2sdk1.8-1.8.0+update181-1.x86_64.rpm
```

修改配置文件

```
vim /etc/profile
#添加
export JAVA_HOME=/usr/java/jdk1.8.0_181-cloudera
export PATH=$JAVA_HOME/bin:$PATH
export CLASSPATH=.:$JAVA_HOME/lib/dt.jar:$JAVA_HOME/lib/tools.jar
```

刷新源

```
source /etc/profile
```

检验

```
java
javac
```

## 十一 安装Mysql

Mysql 下载地址:<https://pan.baidu.com/s/1oaWnAi9J2swKnViAnF0ckQ> 提取码: 164h

此处先把mysql-connector-java-5.1.47.jar传到每台服务器的/usr/share/java(如果目录不存在需要先创建)目录下,并更名为mysql-connector-java.jar,如果不更名后面会报错

主节点

- 1.把mysql-5.7.11-linux-glibc2.5-x86\_64.tar.gz解压到/usr/local目录下并改名为mysql
- 2.创建归档,数据,临时文件夹,创建用户,赋予权限

```
mkdir mysql/arch mysql/data mysql/tmp
useradd mysql
chown -R mysql.mysql /usr/local/mysql
yum -y install perl perl-devel
```

3.修改

```
vi /etc/my.cnf
```

(删除原有配置, 增加如下配置)

```
[client]
port=3306
socket=/usr/local/mysql/data/mysql.sock
default-character-set=utf8mb4

[mysqld]
port=3306
socket=/usr/local/mysql/data/mysql.sock

skip-slave-start

skip-external-locking
key_buffer_size=256M
sort_buffer_size=2M
read_buffer_size=2M
read_rnd_buffer_size=4M
query_cache_size=32M
max_allowed_packet=16M
mysam_sort_buffer_size=128M
tmp_table_size=32M

table_open_cache=512
thread_cache_size=8
wait_timeout=86400
interactive_timeout=86400
max_connections=600

# Try number of CPU's*2 for thread_concurrency
#thread_concurrency=32

#isolation level and default engine
default-storage-engine=INNODB
transaction-isolation=READ-COMMITTED

server-id=1739
basedir=/usr/local/mysql
datadir=/usr/local/mysql/data
pid-file=/usr/local/mysql/data/hostname.pid

#open performance schema
log-warnings
sysdate-is-now

binlog_format=ROW
log_bin_trust_function_creators=1
log-error=/usr/local/mysql/data/hostname.err
log-bin=/usr/local/mysql/arch/mysql-bin
expire_logs_days=7

innodb_write_io_threads=16

relay-log=/usr/local/mysql/relay_log/relay-log
relay-log-index=/usr/local/mysql/relay_log/relay-log.index
relay_log_info_file=/usr/local/mysql/relay_log/relay-log.info

log_slave_updates=1
gtid_mode=OFF
enforce_gtid_consistency=OFF

# slave
slave-parallel-type=LOGICAL_CLOCK
slave-parallel-workers=4
master_info_repository=TABLE
relay_log_info_repository=TABLE
relay_log_recovery=ON

#other logs
#general_log=1
#general_log_file=/usr/local/mysql/data/general_log.err
#slow_query_log=1
#slow_query_log_file=/usr/local/mysql/data/slow_log.err

#for replication slave
sync_binlog=500

#for innodb options
innodb_data_home_dir=/usr/local/mysql/data/
innodb_data_file_path=ibdata1:1G;ibdata2:1G:autoextend

innodb_log_group_home_dir=/usr/local/mysql/arch
innodb_log_files_in_group=4
innodb_log_file_size=1G
innodb_log_buffer_size=200M

#根据生产需要, 调整pool size
innodb_buffer_pool_size=2G
#innodb_additional_mem_pool_size=50M #deprecated in 5.6
tmpdir=/usr/local/mysql/tmp

innodb_lock_wait_timeout=1000
#innodb_thread_concurrency=0
innodb_flush_log_at_trx_commit=2

innodb_locks_unsafe_for_binlog=1

#innodb io features: add for mysql5.5.8
performance_schema
innodb_read_io_threads=4
innodb_write_io_threads=4
innodb-io-capacity=200
#purge threads change default(0) to 1 for purge
innodb_purge_threads=1
innodb_use_native_aio=on
```

```
#case-sensitive file names and separate tablespace
innodb_file_per_table=1
lower_case_table_names=1

[mysqldump]
quick
max_allowed_packet=128M

[mysql]
no-auto-rehash
default-character-set=utf8mb4

[mysqlhotcopy]
interactive-timeout

[mysamchk]
key_buffer_size=256M
sort_buffer_size=256M
read_buffer=2M
write_buffer=2M
```

#### 4.配置服务及开机自启动

```
cd /usr/local/mysql
#将服务文件拷贝到init.d下, 并重命名为mysql
cp support-files/mysql.server /etc/rc.d/init.d/mysql
#赋予可执行权限
chmod +x /etc/rc.d/init.d/mysql
#删除服务
chkconfig --del mysql
#添加服务
chkconfig --add mysql
chkconfig --level 345 mysql on
#添加快捷方式
ln -s /usr/local/mysql/bin/mysql /usr/bin/
```

! [52\\_59.png] [52\\_59.png]

#### \* 5.安装mysql的初始db

```
bin/mysqld \
--defaults-file=/etc/my.cnf \
--user=mysql \
--basedir=/usr/local/mysql/ \
--datadir=/usr/local/mysql/data/ \
--initialize
```

在初始化时如果加上 `--initial-insecure`, 则会创建空密码的 `root@localhost` 账号, 否则会创建带密码的 `root@localhost` 账号, 密码直接写在 `log-error` 日志文件中  
(在5.6版本中是放在 `~/mysql_secret` 文件里, 更加隐蔽, 不熟悉的话可能会无所适从)

#### 6.启动

```
#下面命令执行完记得敲回车
/usr/local/mysql/bin/mysqld_safe --defaults-file=/etc/my.cnf &
#启动mysql(如果上面命令没有启动mysql)
service mysql start
```

! [52\\_60.png] [52\\_60.png]

\* 启动查看停止重启

! [52\\_61.png] [52\\_61.png]

#### \* 7.查看临时密码

```
cat data/hostname.err |grep password
```

! [52\\_62.png] [52\\_62.png]

#### \* 8.登录及修改用户密码

```
mysql -u root -p
#输入刚刚日志中的密码进入
#设置密码
set password for 'root'@'localhost' = password('root');
#配置远程可以访问
grant all privileges on *.* to 'root'@'%' identified by 'root' with grant option;
use mysql
delete from user where host!='%';
#刷新
flush privileges;
#退出
quit
```

#### 9.登录创建cm需要的库的用户

服务名	数据库名	用户名
Cloudera Manager Server	scm	scm
Activity Monitor	amon	amon
Reports Manager	rman	rman
Hue	hue	hue
Hive Metastore Server	metastore	hive

服务名	数据库名	用户名
Sentry Server	sentry	sentry
Cloudera Navigator Audit Server	nav	nav
Cloudera Navigator Metadata Server	navms	navms
Oozie	oozie	oozie

```
mysql -u root -p
#输入修改后的密码
#scm库和权限暂时不创建,后面指定数据库,会自动创建
#CREATE DATABASE scm DEFAULT CHARACTER SET utf8 DEFAULT COLLATE utf8_general_ci;
CREATE DATABASE amon DEFAULT CHARACTER SET utf8 DEFAULT COLLATE utf8_general_ci;
CREATE DATABASE rman DEFAULT CHARACTER SET utf8 DEFAULT COLLATE utf8_general_ci;
CREATE DATABASE metastore DEFAULT CHARACTER SET utf8 DEFAULT COLLATE utf8_general_ci;
CREATE DATABASE hue DEFAULT CHARACTER SET utf8 DEFAULT COLLATE utf8_general_ci;
CREATE DATABASE oozie DEFAULT CHARACTER SET utf8 DEFAULT COLLATE utf8_general_ci;
#GRANT ALL ON scm.* TO 'scm'@'%' IDENTIFIED BY 'scm';
GRANT ALL ON amon.* TO 'amon'@'%' IDENTIFIED BY 'amon';
GRANT ALL ON rman.* TO 'rman'@'%' IDENTIFIED BY 'rman';
GRANT ALL ON metastore.* TO 'hive'@'%' IDENTIFIED BY 'hive';
GRANT ALL ON hue.* TO 'hue'@'%' IDENTIFIED BY 'hue';
GRANT ALL ON oozie.* TO 'oozie'@'%' IDENTIFIED BY 'oozie';
####注意此处再授权一个本主机名地址,不然web页面配置很容易出错
GRANT ALL ON amon.* TO 'amon'@'本主机名' IDENTIFIED BY 'amon';
#刷新源
FLUSH PRIVILEGES;
#检查权限是否正确
show grants for 'amon'@'%';
show grants for 'rman'@'%';
show grants for 'hive'@'%';
show grants for 'hue'@'%';
show grants for 'oozie'@'%';

#hive中文乱码解决
alter table COLUMNS_V2 modify column COMMENT varchar(256) character set utf8;
alter table TABLE_PARAMS modify column PARAM_VALUE varchar(4000) character set utf8;
alter table PARTITION_PARAMS modify column PARAM_VALUE varchar(4000) character set utf8;
alter table PARTITION_KEYS modify column PKEY_COMMENT varchar(4000) character set utf8;
alter table INDEX_PARAMS modify column PARAM_VALUE varchar(4000) character set utf8;

#退出
quit

#重启服务
service mysql restart
```

## 十二 常用yum源更新, gcc, G++, C++等环境(暂缓)

```
yum -y install chkconfig python bind-utils psmisc libxslt zlib sqlite cyrus-sasl-plain cyrus-sasl-gssapi fuse fuse-libs redhat-lsb postgresql* portmap mod_ssl openssl openssl-devel python-psycopg2 MySQL-python python-devel telnet pcre-devel gcc gcc-c++
```

## CM+CDH安装

### 十三 CM+CDH安装

13.1 CM下载地址:<https://archive.cloudera.com/cm6/>

CM百度网盘地址:[https://pan.baidu.com/s/1W2urUqeOPE4\\_cJP-IVXxGw](https://pan.baidu.com/s/1W2urUqeOPE4_cJP-IVXxGw) 提取码:r1h8

### 13.2 通过yum安装daemons,agent,server

主节点

```
yum list | grep cloudera-manager
yum -y install cloudera-manager-daemons cloudera-manager-agent cloudera-manager-server
```

从节点

```
yum list | grep cloudera-manager
yum -y install cloudera-manager-daemons cloudera-manager-agent
```

### 13.3 上传cloudera-manager-installer.bin到主节点,赋予权限

```
mkdir /usr/software
cd /usr/software
chmod +x cloudera-manager-installer.bin
```

13.4 CDH 下载地址:<https://archive.cloudera.com/cdh6/6.2.0/parcels/>

CDH百度网盘地址:<https://pan.baidu.com/s/13T9cHx8Vvm2Xf8KxwweJWg> 提取码:hnki

### 13.5 配置本地Parcel存储库

将1.3上传到指定文件夹



```
cd /opt/cloudera/parcel-repo/
```

校验文件是否下载完全

```
sha1sum CDH-6.2.0-1.cdh6.2.0.p0.967373-e17.parcel | awk '{ print $1 }' > CDH-6.2.0-1.cdh6.2.0.p0.967373-e17.parcel.sha
```

## 13.6 执行安装

```
./cloudera-manager-installer.bin
```

```
rm -f /etc/cloudera-scm-server/db.properties  
#再次执行脚本(一路yes)  
./cloudera-manager-installer.bin
```

此处便安装完成, 可以登录主机IP+7180端口登录web页面, 用户名密码admin/admin, 但是此处暂时不要急于登录网页并配置参数, 先改掉数据库连接方式重启cloudera-scm-server后再进行配置, 操作如下:

1) 执行脚本scm\_prepare\_database.sh

```
#设置Cloudera Manager 数据库  
/opt/cloudera/cm/schema/scm_prepare_database.sh mysql -uroot -p'root' scm scm scm  
  
#进如mysql  
mysql -uroot -proot  
GRANT ALL ON scm.* TO 'scm'@'%' IDENTIFIED BY 'scm';  
FLUSH PRIVILEGES;  
show grants for 'scm'@'%';  
quit
```

2) 停止ClouderaManager服务

```
service cloudera-scm-server stop  
service cloudera-scm-server-db stop
```

3) 删除内嵌的默认数据库PostgreSQL的配置

```
rm -f /etc/cloudera-scm-server/db.mgmt.properties
```

4) 启动ClouderaManager服务

```
service cloudera-scm-server start
```

如果有问题查看日志

```
vim /var/log/cloudera-scm-server/cloudera-scm-server.log
```

## 13.7 CM-CDH安装(账号:admin,密码:admin)

所有机器都要修改

```
#问题一  
#临时  
sysctl vm.swappiness=10  
#永久  
echo 'vm.swappiness=10' >> /etc/sysctl.conf  
#问题二  
echo never > /sys/kernel/mm/transparent_hugepage/defrag  
echo never > /sys/kernel/mm/transparent_hugepage/enabled  
#将问题二命令复制进来, 转发给其他机器  
vim /etc/rc.local  
scp /etc/rc.local root@xxxx:/etc/
```

选择组件, 为了简单安全有效, 选择HDFS, YARN,ZOOKEEPER

一些基本配置, 不需要管, 下一步

## 十四 安装Kafka

---

## 十五 安装Flume

---

## 十六 安装Hbase

---

涉及过多, 全部服务重启

## 十七 安装Spark

---

## 十八 安装hive

---

## 十九 安装Oozie

---

## 二十 安装hue

---

出现以下配置问题

Thrift Server role must be configured in HBase service to use the Hue HBase Browser application.

常规警告: 必须在 HBase 服务中配置 Thrift Server 角色以使用 Hue HBase Browser 应用程序。

解决办法

给HBase添加Thrift Server角色, 为了方便, 将Thrift Server添加到Hue同一主机

重启Hbase服务后, 报以下配置问题

在 HBase Thrift Server 属性中选择服务器以使用 Hue HBase Browser 应用程序

## 二十一 安装Sqoop

---

选择三台机器

## 二十二 安装Impala

---

## 二十三 安装Solr

---

## 二十四 环境问题解决

### 24.1 Clock Offset

### 24.2 Hdfs问题

#### 24.2.1 HDFS Canary

直接抑制

#### 24.2.2 文件系统检查点

不良：文件系统检查点已有 20 小时，40 分钟。占配置检查点期限 1 小时的 2,068.25%。临界阈值:400.00%。自上个文件系统检查点以来已发生 255 个事务。这是 1,000,000 的已配置检查点事务目标的 0.03%。

解决方法：

1. namenode的Cluster ID 与 secondnamenode的Cluster ID 不一致，对比/dfs/nn/current/VERSION 和/dfs/snn/current/VERSION中的Cluster ID 来确认，如果不一致改成一致后重启节点应该可以解决。

2、修改之后还出现这个状况，查看secondnamenode 日志，报

```
ERROR: Exception in doCheckpoint java.io.IOException: Inconsistent checkpoint field
```

这个错误，直接删除 /dfs/snn/current/下所有文件，重启snn节点

#### 24.2.3 擦除编码策略验证测试(先抑制掉)

#### 24.2.4 堆大小(这里给了4G)

#### 24.2.5 内存被调拨过度Memory Overcommit Validation Threshold

所有服务安装完后，总的分配内存是27.9G，总内存是31.4G。内存调拨为27.9/31.4=0.89>默认值0.8，改成0.9就OK了。

## 二十五 cdh 6.2.0引用maven

Project	groupid	artifactid	version	
Apache Avro	org.apache.avro	avro	1.8.2-cdh6.2.0	
	org.apache.avro	avro-compiler	1.8.2-cdh6.2.0	
	org.apache.avro	avro-guava-dependencies	1.8.2-cdh6.2.0	
	org.apache.avro	avro-ipc	1.8.2-cdh6.2.0	
	org.apache.avro	avro-mapred	1.8.2-cdh6.2.0	
	org.apache.avro	avro-maven-plugin	1.8.2-cdh6.2.0	
	org.apache.avro	avro-protobuf	1.8.2-cdh6.2.0	
	org.apache.avro	avro-service-archetype	1.8.2-cdh6.2.0	
	org.apache.avro	avro-thrift	1.8.2-cdh6.2.0	
	org.apache.avro	avro-tools	1.8.2-cdh6.2.0	
	org.apache.avro	trevni-avro	1.8.2-cdh6.2.0	
	org.apache.avro	trevni-core	1.8.2-cdh6.2.0	
	Apache Crunch	org.apache.crunch	crunch-archetype	0.11.0-cdh6.2.0
		org.apache.crunch	crunch-contrib	0.11.0-cdh6.2.0
org.apache.crunch		crunch-core	0.11.0-cdh6.2.0	
org.apache.crunch		crunch-examples	0.11.0-cdh6.2.0	
org.apache.crunch		crunch-hbase	0.11.0-cdh6.2.0	
org.apache.crunch		crunch-hive	0.11.0-cdh6.2.0	
org.apache.crunch		crunch-scrunch	0.11.0-cdh6.2.0	
org.apache.crunch		crunch-spark	0.11.0-cdh6.2.0	
Apache Flume 1.x	org.apache.flume	flume-ng-auth	1.9.0-cdh6.2.0	
	org.apache.flume	flume-ng-configuration	1.9.0-cdh6.2.0	
	org.apache.flume	flume-ng-core	1.9.0-cdh6.2.0	
	org.apache.flume	flume-ng-embedded-agent	1.9.0-cdh6.2.0	
	org.apache.flume	flume-ng-node	1.9.0-cdh6.2.0	
	org.apache.flume	flume-ng-sdk	1.9.0-cdh6.2.0	
	org.apache.flume	flume-ng-tests	1.9.0-cdh6.2.0	
	org.apache.flume	flume-tools	1.9.0-cdh6.2.0	
	org.apache.flume	flume-ng-channels	1.9.0-cdh6.2.0	

Project	groupid	artifactId	version
	org.apache.flume.flume-ng-channels	flume-jdbc-channel	1.9.0-cdh6.2.0
	org.apache.flume.flume-ng-channels	flume-kafka-channel	1.9.0-cdh6.2.0
	org.apache.flume.flume-ng-channels	flume-spillable-memory-channel	1.9.0-cdh6.2.0
	org.apache.flume.flume-ng-clients	flume-ng-log4jappender	1.9.0-cdh6.2.0
	org.apache.flume.flume-ng-configfilters	flume-ng-config-filter-api	1.9.0-cdh6.2.0
	org.apache.flume.flume-ng-configfilters	flume-ng-environment-variable-config-filter	1.9.0-cdh6.2.0
	org.apache.flume.flume-ng-configfilters	flume-ng-external-process-config-filter	1.9.0-cdh6.2.0
	org.apache.flume.flume-ng-configfilters	flume-ng-hadoop-credential-store-config-filter	1.9.0-cdh6.2.0
	org.apache.flume.flume-ng-legacy-sources	flume-avro-source	1.9.0-cdh6.2.0
	org.apache.flume.flume-ng-legacy-sources	flume-thrift-source	1.9.0-cdh6.2.0
	org.apache.flume.flume-ng-sinks	flume-dataset-sink	1.9.0-cdh6.2.0
	org.apache.flume.flume-ng-sinks	flume-hdfs-sink	1.9.0-cdh6.2.0
	org.apache.flume.flume-ng-sinks	flume-hive-sink	1.9.0-cdh6.2.0
	org.apache.flume.flume-ng-sinks	flume-http-sink	1.9.0-cdh6.2.0
	org.apache.flume.flume-ng-sinks	flume-irc-sink	1.9.0-cdh6.2.0
	org.apache.flume.flume-ng-sinks	flume-ng-hbase2-sink	1.9.0-cdh6.2.0
	org.apache.flume.flume-ng-sinks	flume-ng-kafka-sink	1.9.0-cdh6.2.0
	org.apache.flume.flume-ng-sinks	flume-ng-morphline-solr-sink	1.9.0-cdh6.2.0
	org.apache.flume.flume-ng-sources	flume-jms-source	1.9.0-cdh6.2.0
	org.apache.flume.flume-ng-sources	flume-kafka-source	1.9.0-cdh6.2.0
	org.apache.flume.flume-ng-sources	flume-scribe-source	1.9.0-cdh6.2.0
	org.apache.flume.flume-ng-sources	flume-taildir-source	1.9.0-cdh6.2.0
	org.apache.flume.flume-ng-sources	flume-twitter-source	1.9.0-cdh6.2.0
	org.apache.flume.flume-shared	flume-shared-kafka	1.9.0-cdh6.2.0
	org.apache.flume.flume-shared	flume-shared-kafka-test	1.9.0-cdh6.2.0
GCS Connector	com.google.cloud.bigdataoss	gcs-connector	hadoop3-1.9.10-cdh6.2.0
	com.google.cloud.bigdataoss	gcsio	1.9.10-cdh6.2.0
	com.google.cloud.bigdataoss	util	1.9.10-cdh6.2.0
	com.google.cloud.bigdataoss	util-hadoop	hadoop3-1.9.10-cdh6.2.0
Apache Hadoop	org.apache.hadoop	hadoop-allyun	3.0.0-cdh6.2.0
	org.apache.hadoop	hadoop-annotations	3.0.0-cdh6.2.0
	org.apache.hadoop	hadoop-archive-logs	3.0.0-cdh6.2.0
	org.apache.hadoop	hadoop-archives	3.0.0-cdh6.2.0
	org.apache.hadoop	hadoop-assemblies	3.0.0-cdh6.2.0
	org.apache.hadoop	hadoop-auth	3.0.0-cdh6.2.0
	org.apache.hadoop	hadoop-aws	3.0.0-cdh6.2.0
	org.apache.hadoop	hadoop-azure	3.0.0-cdh6.2.0
	org.apache.hadoop	hadoop-azure-datalake	3.0.0-cdh6.2.0
	org.apache.hadoop	hadoop-build-tools	3.0.0-cdh6.2.0
	org.apache.hadoop	hadoop-client	3.0.0-cdh6.2.0
	org.apache.hadoop	hadoop-client-api	3.0.0-cdh6.2.0
	org.apache.hadoop	hadoop-client-integration-tests	3.0.0-cdh6.2.0
	org.apache.hadoop	hadoop-client-minicluster	3.0.0-cdh6.2.0
	org.apache.hadoop	hadoop-client-runtime	3.0.0-cdh6.2.0
	org.apache.hadoop	hadoop-cloud-storage	3.0.0-cdh6.2.0
	org.apache.hadoop	hadoop-common	3.0.0-cdh6.2.0
	org.apache.hadoop	hadoop-datajoin	3.0.0-cdh6.2.0
	org.apache.hadoop	hadoop-distcp	3.0.0-cdh6.2.0
	org.apache.hadoop	hadoop-extras	3.0.0-cdh6.2.0
	org.apache.hadoop	hadoop-gridmix	3.0.0-cdh6.2.0
	org.apache.hadoop	hadoop-hdfs	3.0.0-cdh6.2.0
	org.apache.hadoop	hadoop-hdfs-client	3.0.0-cdh6.2.0
	org.apache.hadoop	hadoop-hdfs-httpfs	3.0.0-cdh6.2.0
	org.apache.hadoop	hadoop-hdfs-native-client	3.0.0-cdh6.2.0
	org.apache.hadoop	hadoop-hdfs-nfs	3.0.0-cdh6.2.0
	org.apache.hadoop	hadoop-kafka	3.0.0-cdh6.2.0
	org.apache.hadoop	hadoop-kms	3.0.0-cdh6.2.0
	org.apache.hadoop	hadoop-mapreduce-client-app	3.0.0-cdh6.2.0
	org.apache.hadoop	hadoop-mapreduce-client-common	3.0.0-cdh6.2.0

Project	groupid	artifactId	version
	org.apache.hadoop	hadoop-mapreduce-client-core	3.0.0-cdh6.2.0
	org.apache.hadoop	hadoop-mapreduce-client-hs	3.0.0-cdh6.2.0
	org.apache.hadoop	hadoop-mapreduce-client-hs-plugins	3.0.0-cdh6.2.0
	org.apache.hadoop	hadoop-mapreduce-client-jobclient	3.0.0-cdh6.2.0
	org.apache.hadoop	hadoop-mapreduce-client-native task	3.0.0-cdh6.2.0
	org.apache.hadoop	hadoop-mapreduce-client-shuffle	3.0.0-cdh6.2.0
	org.apache.hadoop	hadoop-mapreduce-client-uploader	3.0.0-cdh6.2.0
	org.apache.hadoop	hadoop-mapreduce-examples	3.0.0-cdh6.2.0
	org.apache.hadoop	hadoop-maven-plugins	3.0.0-cdh6.2.0
	org.apache.hadoop	hadoop-minicluster	3.0.0-cdh6.2.0
	org.apache.hadoop	hadoop-minikdc	3.0.0-cdh6.2.0
	org.apache.hadoop	hadoop-nfs	3.0.0-cdh6.2.0
	org.apache.hadoop	hadoop-openstack	3.0.0-cdh6.2.0
	org.apache.hadoop	hadoop-resourceestimator	3.0.0-cdh6.2.0
	org.apache.hadoop	hadoop-rumen	3.0.0-cdh6.2.0
	org.apache.hadoop	hadoop-sls	3.0.0-cdh6.2.0
	org.apache.hadoop	hadoop-streaming	3.0.0-cdh6.2.0
	org.apache.hadoop	hadoop-yarn-api	3.0.0-cdh6.2.0
	org.apache.hadoop	hadoop-yarn-applications-distributedshell	3.0.0-cdh6.2.0
	org.apache.hadoop	hadoop-yarn-applications-unmanaged-am-launcher	3.0.0-cdh6.2.0
	org.apache.hadoop	hadoop-yarn-client	3.0.0-cdh6.2.0
	org.apache.hadoop	hadoop-yarn-common	3.0.0-cdh6.2.0
	org.apache.hadoop	hadoop-yarn-registry	3.0.0-cdh6.2.0
	org.apache.hadoop	hadoop-yarn-server-applicationhistoryservice	3.0.0-cdh6.2.0
	org.apache.hadoop	hadoop-yarn-server-common	3.0.0-cdh6.2.0
	org.apache.hadoop	hadoop-yarn-server-nodemanager	3.0.0-cdh6.2.0
	org.apache.hadoop	hadoop-yarn-server-resourcemanager	3.0.0-cdh6.2.0
	org.apache.hadoop	hadoop-yarn-server-router	3.0.0-cdh6.2.0
	org.apache.hadoop	hadoop-yarn-server-sharedcachemanager	3.0.0-cdh6.2.0
	org.apache.hadoop	hadoop-yarn-server-tests	3.0.0-cdh6.2.0
	org.apache.hadoop	hadoop-yarn-server-timeline-pluginstorage	3.0.0-cdh6.2.0
	org.apache.hadoop	hadoop-yarn-server-timelineservice	3.0.0-cdh6.2.0
	org.apache.hadoop	hadoop-yarn-server-timelineservice-hbase	3.0.0-cdh6.2.0
	org.apache.hadoop	hadoop-yarn-server-timelineservice-hbase-tests	3.0.0-cdh6.2.0
	org.apache.hadoop	hadoop-yarn-server-web-proxy	3.0.0-cdh6.2.0
Apache HBase	org.apache.hbase	hbase-annotations	2.1.0-cdh6.2.0
	org.apache.hbase	hbase-checkstyle	2.1.0-cdh6.2.0
	org.apache.hbase	hbase-client	2.1.0-cdh6.2.0
	org.apache.hbase	hbase-client-project	2.1.0-cdh6.2.0
	org.apache.hbase	hbase-common	2.1.0-cdh6.2.0
	org.apache.hbase	hbase-endpoint	2.1.0-cdh6.2.0
	org.apache.hbase	hbase-error-prone	2.1.0-cdh6.2.0
	org.apache.hbase	hbase-examples	2.1.0-cdh6.2.0
	org.apache.hbase	hbase-external-blockcache	2.1.0-cdh6.2.0
	org.apache.hbase	hbase-hadoop-compat	2.1.0-cdh6.2.0
	org.apache.hbase	hbase-hadoop2-compat	2.1.0-cdh6.2.0
	org.apache.hbase	hbase-http	2.1.0-cdh6.2.0
	org.apache.hbase	hbase-it	2.1.0-cdh6.2.0
	org.apache.hbase	hbase-mapreduce	2.1.0-cdh6.2.0
	org.apache.hbase	hbase-metrics	2.1.0-cdh6.2.0
	org.apache.hbase	hbase-metrics-api	2.1.0-cdh6.2.0
	org.apache.hbase	hbase-procedure	2.1.0-cdh6.2.0
	org.apache.hbase	hbase-protocol	2.1.0-cdh6.2.0
	org.apache.hbase	hbase-protocol-shaded	2.1.0-cdh6.2.0
	org.apache.hbase	hbase-replication	2.1.0-cdh6.2.0
	org.apache.hbase	hbase-resource-bundle	2.1.0-cdh6.2.0
	org.apache.hbase	hbase-rest	2.1.0-cdh6.2.0
	org.apache.hbase	hbase-rsgroup	2.1.0-cdh6.2.0
	org.apache.hbase	hbase-server	2.1.0-cdh6.2.0

Project	groupid	artifactId	version
	org.apache.hbase	hbase-shaded-client	2.1.0-cdh6.2.0
	org.apache.hbase	hbase-shaded-client-byo-hadoop	2.1.0-cdh6.2.0
	org.apache.hbase	hbase-shaded-client-project	2.1.0-cdh6.2.0
	org.apache.hbase	hbase-shaded-mapreduce	2.1.0-cdh6.2.0
	org.apache.hbase	hbase-shell	2.1.0-cdh6.2.0
	org.apache.hbase	hbase-spark	2.1.0-cdh6.2.0
	org.apache.hbase	hbase-spark-it	2.1.0-cdh6.2.0
	org.apache.hbase	hbase-testing-util	2.1.0-cdh6.2.0
	org.apache.hbase	hbase-thrift	2.1.0-cdh6.2.0
	org.apache.hbase	hbase-zookeeper	2.1.0-cdh6.2.0
HBase Indexer	com.ngdata	hbase-indexer-all	1.5-cdh6.2.0
	com.ngdata	hbase-indexer-cli	1.5-cdh6.2.0
	com.ngdata	hbase-indexer-common	1.5-cdh6.2.0
	com.ngdata	hbase-indexer-demo	1.5-cdh6.2.0
	com.ngdata	hbase-indexer-dist	1.5-cdh6.2.0
	com.ngdata	hbase-indexer-engine	1.5-cdh6.2.0
	com.ngdata	hbase-indexer-model	1.5-cdh6.2.0
	com.ngdata	hbase-indexer-morphlines	1.5-cdh6.2.0
	com.ngdata	hbase-indexer-mr	1.5-cdh6.2.0
	com.ngdata	hbase-indexer-server	1.5-cdh6.2.0
	com.ngdata	hbase-sep-api	1.5-cdh6.2.0
	com.ngdata	hbase-sep-demo	1.5-cdh6.2.0
	com.ngdata	hbase-sep-impl	1.5-cdh6.2.0
	com.ngdata	hbase-sep-tools	1.5-cdh6.2.0
Apache Hive	org.apache.hive	hive-accumulo-handler	2.1.1-cdh6.2.0
	org.apache.hive	hive-ant	2.1.1-cdh6.2.0
	org.apache.hive	hive-beeline	2.1.1-cdh6.2.0
	org.apache.hive	hive-classification	2.1.1-cdh6.2.0
	org.apache.hive	hive-cli	2.1.1-cdh6.2.0
	org.apache.hive	hive-common	2.1.1-cdh6.2.0
	org.apache.hive	hive-contrib	2.1.1-cdh6.2.0
	org.apache.hive	hive-exec	2.1.1-cdh6.2.0
	org.apache.hive	hive-hbase-handler	2.1.1-cdh6.2.0
	org.apache.hive	hive-hplsql	2.1.1-cdh6.2.0
	org.apache.hive	hive-jdbc	2.1.1-cdh6.2.0
	org.apache.hive	hive-kryo-registry	2.1.1-cdh6.2.0
	org.apache.hive	hive-llap-client	2.1.1-cdh6.2.0
	org.apache.hive	hive-llap-common	2.1.1-cdh6.2.0
	org.apache.hive	hive-llap-ext-client	2.1.1-cdh6.2.0
	org.apache.hive	hive-llap-server	2.1.1-cdh6.2.0
	org.apache.hive	hive-llap-tez	2.1.1-cdh6.2.0
	org.apache.hive	hive-metastore	2.1.1-cdh6.2.0
	org.apache.hive	hive-orc	2.1.1-cdh6.2.0
	org.apache.hive	hive-serde	2.1.1-cdh6.2.0
	org.apache.hive	hive-service	2.1.1-cdh6.2.0
	org.apache.hive	hive-service-rpc	2.1.1-cdh6.2.0
	org.apache.hive	hive-shims	2.1.1-cdh6.2.0
	org.apache.hive	hive-spark-client	2.1.1-cdh6.2.0
	org.apache.hive	hive-storage-api	2.1.1-cdh6.2.0
	org.apache.hive	hive-testutils	2.1.1-cdh6.2.0
	org.apache.hive.hcatalog	hive-hcatalog-core	2.1.1-cdh6.2.0
	org.apache.hive.hcatalog	hive-hcatalog-pig-adapter	2.1.1-cdh6.2.0
	org.apache.hive.hcatalog	hive-hcatalog-server-extensions	2.1.1-cdh6.2.0
	org.apache.hive.hcatalog	hive-hcatalog-streaming	2.1.1-cdh6.2.0
	org.apache.hive.hcatalog	hive-webhcat	2.1.1-cdh6.2.0
	org.apache.hive.hcatalog	hive-webhcat-java-client	2.1.1-cdh6.2.0
	org.apache.hive.shims	hive-shims-0.23	2.1.1-cdh6.2.0
	org.apache.hive.shims	hive-shims-common	2.1.1-cdh6.2.0
	org.apache.hive.shims	hive-shims-scheduler	2.1.1-cdh6.2.0

Project	groupid	artifactId	version
Apache Kafka	org.apache.kafka	connect-api	2.1.0-cdh6.2.0
	org.apache.kafka	connect-basic-auth-extension	2.1.0-cdh6.2.0
	org.apache.kafka	connect-file	2.1.0-cdh6.2.0
	org.apache.kafka	connect-json	2.1.0-cdh6.2.0
	org.apache.kafka	connect-runtime	2.1.0-cdh6.2.0
	org.apache.kafka	connect-transforms	2.1.0-cdh6.2.0
	org.apache.kafka	kafka-clients	2.1.0-cdh6.2.0
	org.apache.kafka	kafka-examples	2.1.0-cdh6.2.0
	org.apache.kafka	kafka-log4j-appender	2.1.0-cdh6.2.0
	org.apache.kafka	kafka-streams	2.1.0-cdh6.2.0
	org.apache.kafka	kafka-streams-examples	2.1.0-cdh6.2.0
	org.apache.kafka	kafka-streams-scala_2.11	2.1.0-cdh6.2.0
	org.apache.kafka	kafka-streams-scala_2.12	2.1.0-cdh6.2.0
	org.apache.kafka	kafka-streams-test-utils	2.1.0-cdh6.2.0
	org.apache.kafka	kafka-tools	2.1.0-cdh6.2.0
	org.apache.kafka	kafka_2.11	2.1.0-cdh6.2.0
	org.apache.kafka	kafka_2.12	2.1.0-cdh6.2.0
Kite SDK	org.kitesdk	kite-data-core	1.0.0-cdh6.2.0
	org.kitesdk	kite-data-crunch	1.0.0-cdh6.2.0
	org.kitesdk	kite-data-hbase	1.0.0-cdh6.2.0
	org.kitesdk	kite-data-hive	1.0.0-cdh6.2.0
	org.kitesdk	kite-data-mapreduce	1.0.0-cdh6.2.0
	org.kitesdk	kite-data-oozie	1.0.0-cdh6.2.0
	org.kitesdk	kite-data-s3	1.0.0-cdh6.2.0
	org.kitesdk	kite-data-spark	1.0.0-cdh6.2.0
	org.kitesdk	kite-hadoop-compatibility	1.0.0-cdh6.2.0
	org.kitesdk	kite-maven-plugin	1.0.0-cdh6.2.0
	org.kitesdk	kite-minicluster	1.0.0-cdh6.2.0
	org.kitesdk	kite-morphlines-avro	1.0.0-cdh6.2.0
	org.kitesdk	kite-morphlines-core	1.0.0-cdh6.2.0
	org.kitesdk	kite-morphlines-hadoop-core	1.0.0-cdh6.2.0
	org.kitesdk	kite-morphlines-hadoop-parquet-avro	1.0.0-cdh6.2.0
	org.kitesdk	kite-morphlines-hadoop-rfile	1.0.0-cdh6.2.0
	org.kitesdk	kite-morphlines-hadoop-sequencefile	1.0.0-cdh6.2.0
	org.kitesdk	kite-morphlines-json	1.0.0-cdh6.2.0
	org.kitesdk	kite-morphlines-maxmind	1.0.0-cdh6.2.0
	org.kitesdk	kite-morphlines-metrics-scalable	1.0.0-cdh6.2.0
	org.kitesdk	kite-morphlines-metrics-servlets	1.0.0-cdh6.2.0
	org.kitesdk	kite-morphlines-protobuf	1.0.0-cdh6.2.0
	org.kitesdk	kite-morphlines-saxon	1.0.0-cdh6.2.0
	org.kitesdk	kite-morphlines-solr-cell	1.0.0-cdh6.2.0
	org.kitesdk	kite-morphlines-solr-core	1.0.0-cdh6.2.0
	org.kitesdk	kite-morphlines-tika-core	1.0.0-cdh6.2.0
	org.kitesdk	kite-morphlines-tika-decompress	1.0.0-cdh6.2.0
	org.kitesdk	kite-morphlines-twitter	1.0.0-cdh6.2.0
	org.kitesdk	kite-morphlines-useragent	1.0.0-cdh6.2.0
	org.kitesdk	kite-tools	1.0.0-cdh6.2.0
Apache Kudu	org.apache.kudu	kudu-client	1.9.0-cdh6.2.0
	org.apache.kudu	kudu-client-tools	1.9.0-cdh6.2.0
	org.apache.kudu	kudu-flume-sink	1.9.0-cdh6.2.0
	org.apache.kudu	kudu-mapreduce	1.9.0-cdh6.2.0
	org.apache.kudu	kudu-spark2-tools_2.11	1.9.0-cdh6.2.0
	org.apache.kudu	kudu-spark2_2.11	1.9.0-cdh6.2.0
	org.apache.kudu	kudu-test-utils	1.9.0-cdh6.2.0
Apache Oozie	org.apache.oozie	oozie-client	5.1.0-cdh6.2.0
	org.apache.oozie	oozie-core	5.1.0-cdh6.2.0
	org.apache.oozie	oozie-examples	5.1.0-cdh6.2.0
	org.apache.oozie	oozie-fluent-job-api	5.1.0-cdh6.2.0
	org.apache.oozie	oozie-fluent-job-client	5.1.0-cdh6.2.0

Project	groupid	artifactId	version
	org.apache.oozie	oozie-server	5.1.0-cdh6.2.0
	org.apache.oozie	oozie-sharelib-distcp	5.1.0-cdh6.2.0
	org.apache.oozie	oozie-sharelib-git	5.1.0-cdh6.2.0
	org.apache.oozie	oozie-sharelib-hcatalog	5.1.0-cdh6.2.0
	org.apache.oozie	oozie-sharelib-hive	5.1.0-cdh6.2.0
	org.apache.oozie	oozie-sharelib-hive2	5.1.0-cdh6.2.0
	org.apache.oozie	oozie-sharelib-oozie	5.1.0-cdh6.2.0
	org.apache.oozie	oozie-sharelib-pig	5.1.0-cdh6.2.0
	org.apache.oozie	oozie-sharelib-spark	5.1.0-cdh6.2.0
	org.apache.oozie	oozie-sharelib-sqoop	5.1.0-cdh6.2.0
	org.apache.oozie	oozie-sharelib-streaming	5.1.0-cdh6.2.0
	org.apache.oozie	oozie-tools	5.1.0-cdh6.2.0
	org.apache.oozie.test	oozie-mini	5.1.0-cdh6.2.0
Apache Pig	org.apache.pig	pig	0.17.0-cdh6.2.0
	org.apache.pig	piggybank	0.17.0-cdh6.2.0
	org.apache.pig	pigsmoke	0.17.0-cdh6.2.0
	org.apache.pig	pigunit	0.17.0-cdh6.2.0
Cloudera Search	com.cloudera.search	search-crunch	1.0.0-cdh6.2.0
	com.cloudera.search	search-mr	1.0.0-cdh6.2.0
Apache Sentry	com.cloudera.cdh	solr-upgrade	1.0.0-cdh6.2.0
	org.apache.sentry	sentry-binding-hbase-indexer	2.1.0-cdh6.2.0
	org.apache.sentry	sentry-binding-hive	2.1.0-cdh6.2.0
	org.apache.sentry	sentry-binding-hive-common	2.1.0-cdh6.2.0
	org.apache.sentry	sentry-binding-hive-conf	2.1.0-cdh6.2.0
	org.apache.sentry	sentry-binding-hive-follower	2.1.0-cdh6.2.0
	org.apache.sentry	sentry-binding-kafka	2.1.0-cdh6.2.0
	org.apache.sentry	sentry-binding-solr	2.1.0-cdh6.2.0
	org.apache.sentry	sentry-core-common	2.1.0-cdh6.2.0
	org.apache.sentry	sentry-core-model-db	2.1.0-cdh6.2.0
	org.apache.sentry	sentry-core-model-indexer	2.1.0-cdh6.2.0
	org.apache.sentry	sentry-core-model-kafka	2.1.0-cdh6.2.0
	org.apache.sentry	sentry-core-model-solr	2.1.0-cdh6.2.0
	org.apache.sentry	sentry-dist	2.1.0-cdh6.2.0
	org.apache.sentry	sentry-hdfs-common	2.1.0-cdh6.2.0
	org.apache.sentry	sentry-hdfs-dist	2.1.0-cdh6.2.0
	org.apache.sentry	sentry-hdfs-namenode-plugin	2.1.0-cdh6.2.0
	org.apache.sentry	sentry-hdfs-service	2.1.0-cdh6.2.0
	org.apache.sentry	sentry-policy-common	2.1.0-cdh6.2.0
	org.apache.sentry	sentry-policy-engine	2.1.0-cdh6.2.0
	org.apache.sentry	sentry-provider-cache	2.1.0-cdh6.2.0
	org.apache.sentry	sentry-provider-common	2.1.0-cdh6.2.0
	org.apache.sentry	sentry-provider-db	2.1.0-cdh6.2.0
	org.apache.sentry	sentry-provider-file	2.1.0-cdh6.2.0
	org.apache.sentry	sentry-service-api	2.1.0-cdh6.2.0
	org.apache.sentry	sentry-service-client	2.1.0-cdh6.2.0
	org.apache.sentry	sentry-service-providers	2.1.0-cdh6.2.0
	org.apache.sentry	sentry-service-server	2.1.0-cdh6.2.0
	org.apache.sentry	sentry-service-web	2.1.0-cdh6.2.0
	org.apache.sentry	sentry-shaded	2.1.0-cdh6.2.0
	org.apache.sentry	sentry-shaded-miscellaneous	2.1.0-cdh6.2.0
	org.apache.sentry	sentry-spi	2.1.0-cdh6.2.0
	org.apache.sentry	sentry-tests-hive	2.1.0-cdh6.2.0
	org.apache.sentry	sentry-tests-kafka	2.1.0-cdh6.2.0
	org.apache.sentry	sentry-tests-solr	2.1.0-cdh6.2.0
	org.apache.sentry	sentry-tools	2.1.0-cdh6.2.0
	org.apache.sentry	solr-sentry-handlers	2.1.0-cdh6.2.0
Apache Solr	org.apache.lucene	lucene-analyzers-common	7.4.0-cdh6.2.0
	org.apache.lucene	lucene-analyzers-icu	7.4.0-cdh6.2.0
	org.apache.lucene	lucene-analyzers-kuromoji	7.4.0-cdh6.2.0



Project	groupid	artifactId	version
	org.apache.lucene	lucene-analyzers-morfologik	7.4.0-cdh6.2.0
	org.apache.lucene	lucene-analyzers-nori	7.4.0-cdh6.2.0
	org.apache.lucene	lucene-analyzers-opennlp	7.4.0-cdh6.2.0
	org.apache.lucene	lucene-analyzers-phonetic	7.4.0-cdh6.2.0
	org.apache.lucene	lucene-analyzers-smartcn	7.4.0-cdh6.2.0
	org.apache.lucene	lucene-analyzers-stempel	7.4.0-cdh6.2.0
	org.apache.lucene	lucene-analyzers-uima	7.4.0-cdh6.2.0
	org.apache.lucene	lucene-backward-codecs	7.4.0-cdh6.2.0
	org.apache.lucene	lucene-benchmark	7.4.0-cdh6.2.0
	org.apache.lucene	lucene-classification	7.4.0-cdh6.2.0
	org.apache.lucene	lucene-codecs	7.4.0-cdh6.2.0
	org.apache.lucene	lucene-core	7.4.0-cdh6.2.0
	org.apache.lucene	lucene-demo	7.4.0-cdh6.2.0
	org.apache.lucene	lucene-expressions	7.4.0-cdh6.2.0
	org.apache.lucene	lucene-facet	7.4.0-cdh6.2.0
	org.apache.lucene	lucene-grouping	7.4.0-cdh6.2.0
	org.apache.lucene	lucene-highlighter	7.4.0-cdh6.2.0
	org.apache.lucene	lucene-join	7.4.0-cdh6.2.0
	org.apache.lucene	lucene-memory	7.4.0-cdh6.2.0
	org.apache.lucene	lucene-misc	7.4.0-cdh6.2.0
	org.apache.lucene	lucene-queries	7.4.0-cdh6.2.0
	org.apache.lucene	lucene-queryparser	7.4.0-cdh6.2.0
	org.apache.lucene	lucene-replicator	7.4.0-cdh6.2.0
	org.apache.lucene	lucene-sandbox	7.4.0-cdh6.2.0
	org.apache.lucene	lucene-spatial	7.4.0-cdh6.2.0
	org.apache.lucene	lucene-spatial-extras	7.4.0-cdh6.2.0
	org.apache.lucene	lucene-spatial3d	7.4.0-cdh6.2.0
	org.apache.lucene	lucene-suggest	7.4.0-cdh6.2.0
	org.apache.lucene	lucene-test-framework	7.4.0-cdh6.2.0
	org.apache.solr	solr-analysis-extras	7.4.0-cdh6.2.0
	org.apache.solr	solr-analytics	7.4.0-cdh6.2.0
	org.apache.solr	solr-cell	7.4.0-cdh6.2.0
	org.apache.solr	solr-clustering	7.4.0-cdh6.2.0
	org.apache.solr	solr-core	7.4.0-cdh6.2.0
	org.apache.solr	solr-dataimporthandler	7.4.0-cdh6.2.0
	org.apache.solr	solr-dataimporthandler-extras	7.4.0-cdh6.2.0
	org.apache.solr	solr-jetty-customizations	7.4.0-cdh6.2.0
	org.apache.solr	solr-langid	7.4.0-cdh6.2.0
	org.apache.solr	solr-ltr	7.4.0-cdh6.2.0
	org.apache.solr	solr-prometheus-exporter	7.4.0-cdh6.2.0
	org.apache.solr	solr-security-util	7.4.0-cdh6.2.0
	org.apache.solr	solr-sentry-audit-logging	7.4.0-cdh6.2.0
	org.apache.solr	solr-solrj	7.4.0-cdh6.2.0
	org.apache.solr	solr-test-framework	7.4.0-cdh6.2.0
	org.apache.solr	solr-uima	7.4.0-cdh6.2.0
	org.apache.solr	solr-velocity	7.4.0-cdh6.2.0
Apache Spark	org.apache.spark	spark-avro_2.11	2.4.0-cdh6.2.0
	org.apache.spark	spark-catalyst_2.11	2.4.0-cdh6.2.0
	org.apache.spark	spark-core_2.11	2.4.0-cdh6.2.0
	org.apache.spark	spark-graphx_2.11	2.4.0-cdh6.2.0
	org.apache.spark	spark-hadoop-cloud_2.11	2.4.0-cdh6.2.0
	org.apache.spark	spark-hive_2.11	2.4.0-cdh6.2.0
	org.apache.spark	spark-kubernetes_2.11	2.4.0-cdh6.2.0
	org.apache.spark	spark-kvstore_2.11	2.4.0-cdh6.2.0
	org.apache.spark	spark-launcher_2.11	2.4.0-cdh6.2.0
	org.apache.spark	spark-mllib-local_2.11	2.4.0-cdh6.2.0
	org.apache.spark	spark-mllib_2.11	2.4.0-cdh6.2.0
	org.apache.spark	spark-network-common_2.11	2.4.0-cdh6.2.0
	org.apache.spark	spark-network-shuffle_2.11	2.4.0-cdh6.2.0

Project	groupid	artifactId	version
	org.apache.spark	spark-network-yarn_2.11	2.4.0-cdh6.2.0
	org.apache.spark	spark-repl_2.11	2.4.0-cdh6.2.0
	org.apache.spark	spark-sketch_2.11	2.4.0-cdh6.2.0
	org.apache.spark	spark-sql-kafka-0-10_2.11	2.4.0-cdh6.2.0
	org.apache.spark	spark-sql_2.11	2.4.0-cdh6.2.0
	org.apache.spark	spark-streaming-flume-assembly_2.11	2.4.0-cdh6.2.0
	org.apache.spark	spark-streaming-flume-sink_2.11	2.4.0-cdh6.2.0
	org.apache.spark	spark-streaming-flume_2.11	2.4.0-cdh6.2.0
	org.apache.spark	spark-streaming-kafka-0-10-assembly_2.11	2.4.0-cdh6.2.0
	org.apache.spark	spark-streaming-kafka-0-10_2.11	2.4.0-cdh6.2.0
	org.apache.spark	spark-streaming_2.11	2.4.0-cdh6.2.0
	org.apache.spark	spark-tags_2.11	2.4.0-cdh6.2.0
	org.apache.spark	spark-unsafe_2.11	2.4.0-cdh6.2.0
	org.apache.spark	spark-yarn_2.11	2.4.0-cdh6.2.0
Apache Sqoop	org.apache.sqoop	sqoop	1.4.7-cdh6.2.0
Apache ZooKeeper	org.apache.zookeeper	zookeeper	3.4.5-cdh6.2.0

文章永久链接: <https://tech.souyunku.com/?p=30493>

赞(92)

打赏

版权归原创作者所有, 任何形式转载请联系作者: 搜云库 » 环境篇: CM+CDH6.2.0安装(全网最全)

上一篇  
环境篇: Git和Github

下一篇  
环境篇: VMware Workstation安装Centos7

本站: 免责声明!

## 相关推荐

Java顺序查找、二分查找

Java冒泡排序、选择排序、插入排序、希尔排序、归并排序、快速排序

jvm: 字节码(字节码角度分析a++与-a)

数据库连接池: Durid(执行流程、工具类)

java: 面向接口编程(解耦)

jvm: 字节码执行流程

jvm: 类文件结构(魔数、版本、常量池)

HashMap: 源代码(构造方法、put、resize、get、remove、replace)

## 评论 抢沙发

你的评论可以一针见血

提交评论

一个专注于Java技术系列文章的技术分享网站

© 2021 搜云库 京ICP备17065017

>>> 网站已平稳运行: 617天 10小时 35分 48秒 <<<